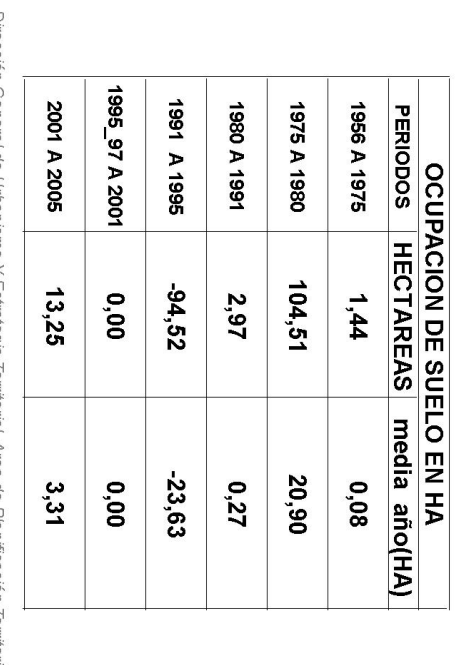
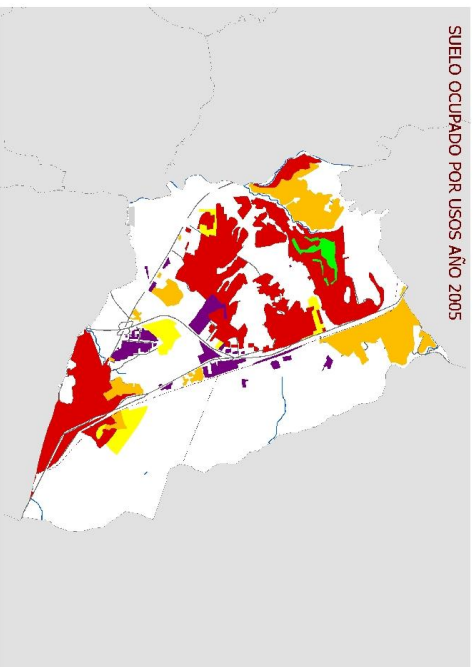
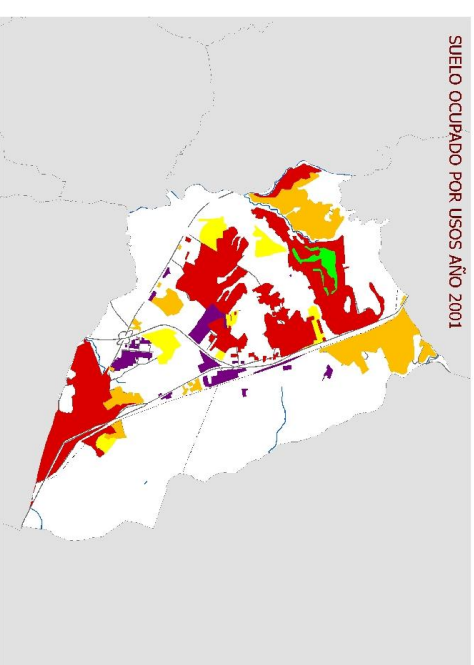
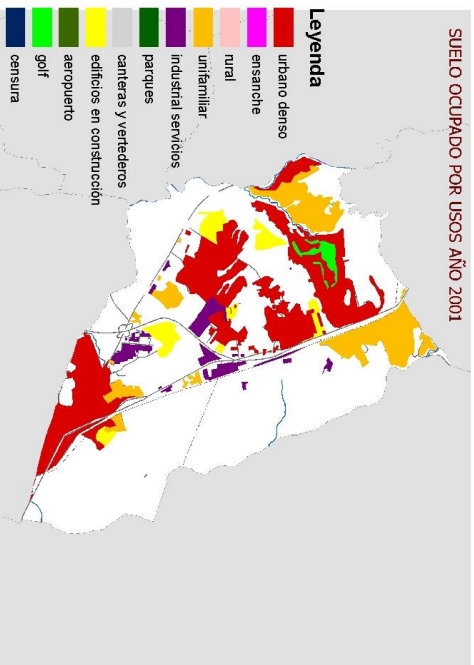
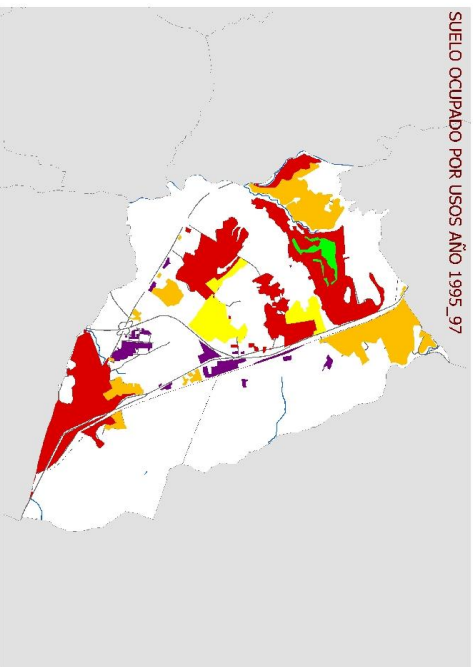
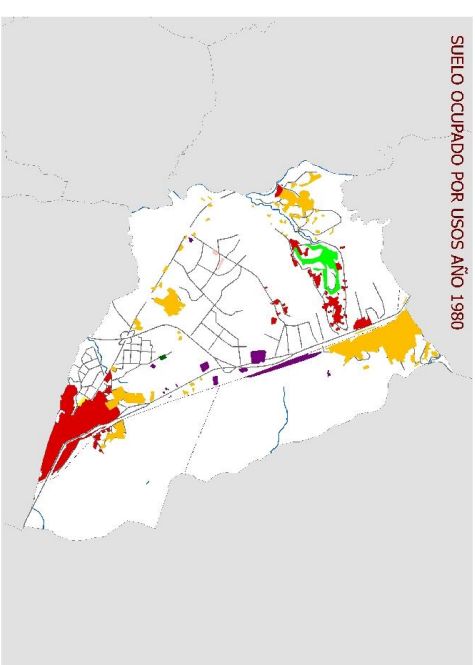
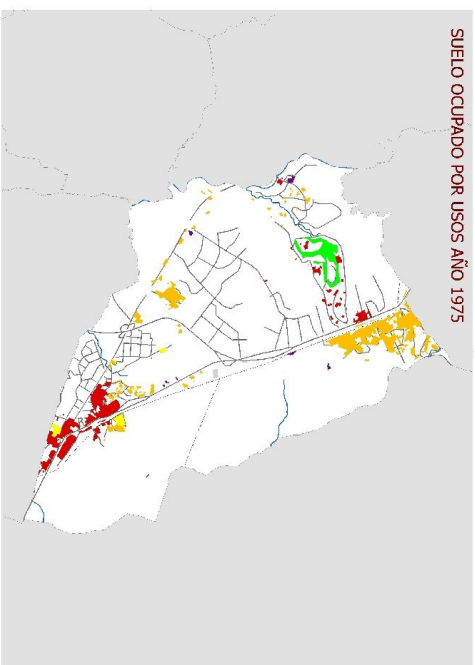
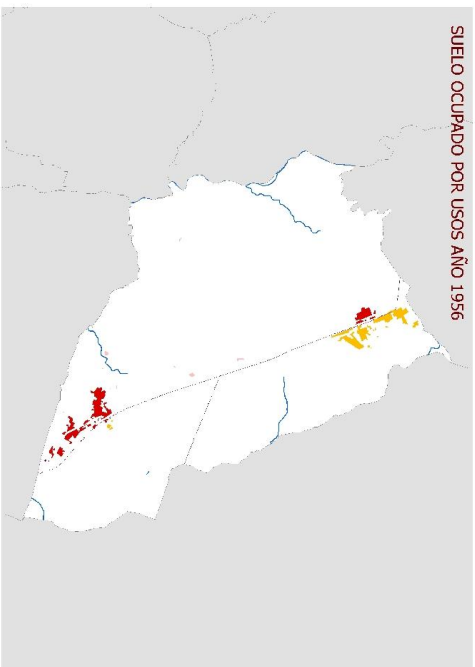
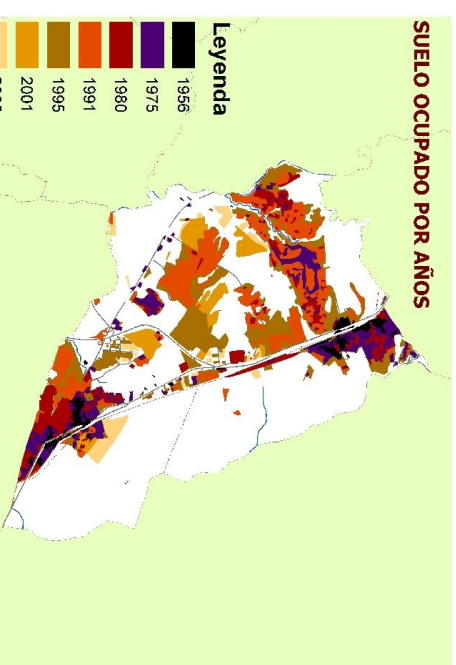


# SUELO OCUPADO POR USOS Y AÑOS ROZAS DE MADRID



| OCUPACION DE SUELO EN HA |           |               |
|--------------------------|-----------|---------------|
| PERIODOS                 | HECTAREAS | media año(HA) |
| 1956 A 1975              | 1,44      | 0,08          |
| 1975 A 1980              | 104,51    | 20,90         |
| 1980 A 1991              | 2,97      | 0,27          |
| 1991 A 1995              | -94,52    | -23,63        |
| 1995_97 A 2001           | 0,00      | 0,00          |
| 2001 A 2005              | 13,25     | 3,31          |



**Legenda**

- urbano denso
- ensanche
- rural
- unifamiliar
- industrial servicios
- parques
- canteras y vertederos
- edificios en construcción
- aeropuerto
- golf
- censura