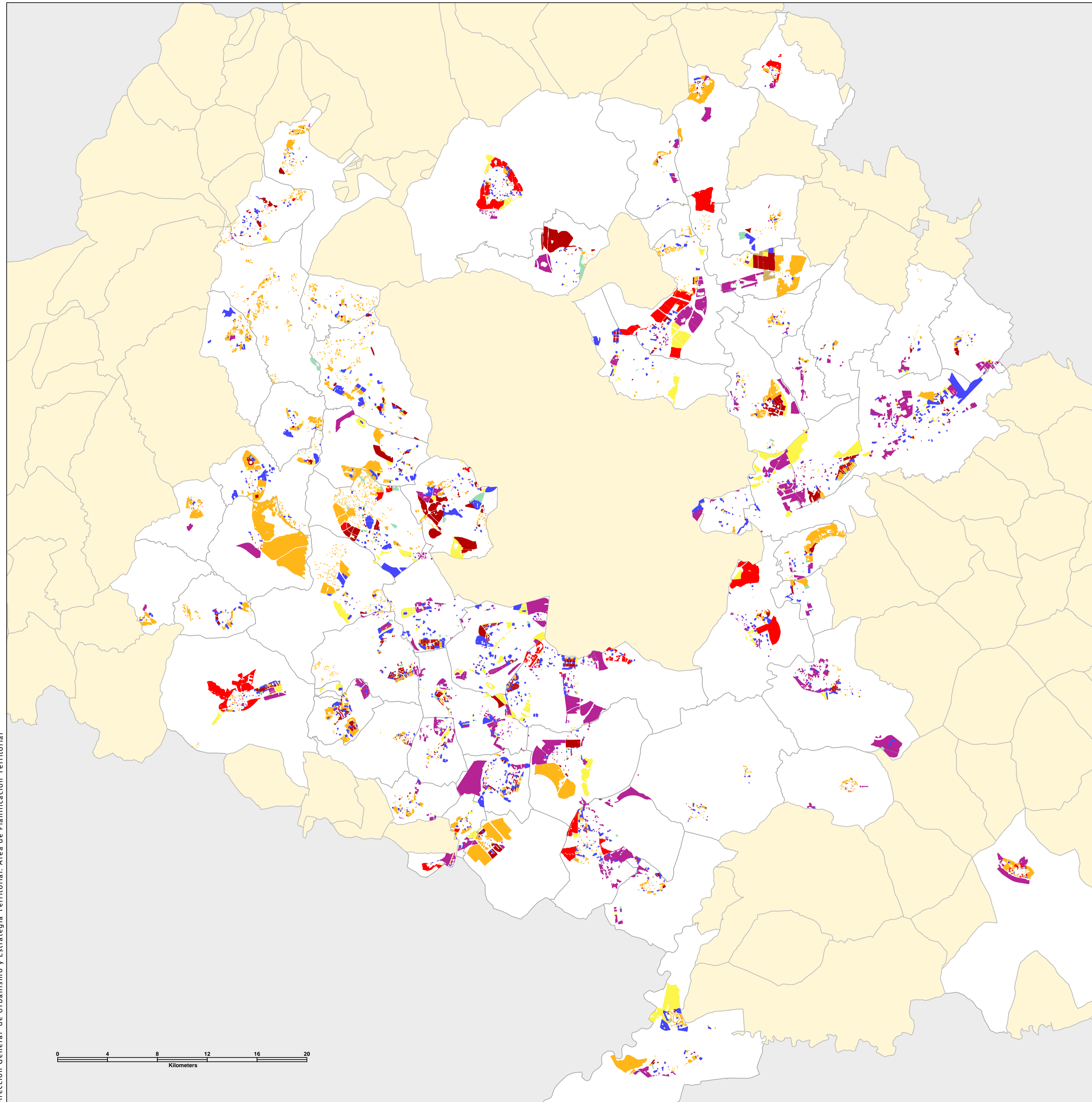


## 5 . USOS DEL SUELO VACANTE 2006



SUPERFICIE DE SUELO VACANTE SEGÚN USOS (m2)								
INE	MUNICIPIOS	RESIDENCIAL EN GENERAL	RESIDENCIAL MULTIFAMILIAR	RESIDENCIAL UNIFAMILIAR	INDUSTRIAL	TERCIARIO	COMERCIAL	EQUIPAMIENTO
2	AJALVIR	0	0	89.313	384.143	0	9.702	17.469
5	ALCALÁ DE HENARES	34.553	166.714	740.353	3.591.151	525.891	51.862	2.840.041
6	ALCOBENDAS	0	136.299	64.052	283.010	100.741	951.130	466.840
7	ALCORCÓN	0	380.502	156.963	869.934	524.095	83.017	678.522
9	ALGETE	0	1.876.177	3.794.657	1.384.231	471.627	0	144.343
13	ARANJUEZ	0	60.670	2.734.883	574.731	2.912.454	139.511	834.227
14	ARGANDA DEL REY	2.371	147.865	48.879	3.693.483	38.035	146.097	263.706
15	ARROYOMOLINOS	0	482.375	1.266.046	608.119	233.446	114.614	477.436
22	BOADILLA DEL MONTE	612.878	1.022.494	2.583.091	26.839	545.507	150.026	1.407.754
26	BRUNETE	0	15.205	12.344.912	1.044.233	0	0	20.786
32	CAMARMA DE ESTERUELAS	0	52.136	51.433	307.173	81.767	0	57.672
36	CASARRUBUELOS	404.239	6.018	28.255	566.920	6.818	0	8.880
40	CIEMPOZUELOS	529	105.747	271.412	569.177	24.654	26.225	125.914
41	COBENA	0	29.365	296.619	53.070	0	37.767	49.531
44	COLMENAREJO	0	4.315	819.325	113.770	24.343	0	415.165
45	COLMENAR VIEJO	3.161.688	86.995	371.394	216.525	795.854	0	244.959
47	COLLADO VILLALBA	43.836	368.154	450.426	29.075	126.994	2.386	147.869
49	COSLADA	0	32.457	79.105	474.737	7.293	68.563	504.400
53	DAGANZO DE ARRIBA	0	7.852	136.366	134.246	0	2.567	27.718
58	FUENLABRADA	0	121.296	125.286	1.614.821	678.796	108.852	569.657
59	FUENTE EL SAZ DE JARAMA	1.553	82.751	234.292	22.116	0	2.526	379.850
61	GALAPAGAR	0	7.656	1.247.955	11.933	0	2.051	18.410
65	GETAFE	1.071.448	542.177	136.418	4.694.331	802.582	10.879	804.832
66	GRANÓN	0	16.165	508.685	250.438	0	0	62.752
73	HUMANES DE MADRID	0	50.366	93.689	775.902	271.403	0	140.672
74	LEGANES	3.754	567.443	130.056	3.032.566	1.266.913	287.894	1.286.874
80	MAJADAHONDA	0	884.791	2.404.449	702.678	556.486	10.472	421.874
83	MECO	0	120.179	151.439	595.209	26.613	60.553	72.388
84	MEJORADA DEL CAMPO	0	162.951	2.478.387	362.306	0	0	106.391
86	EL MOLAR	2.347.288	18.731	2.024.138	636.430	0	804	57.981
89	MORALEJA DE ENMEDIO	0	11.165	183.911	84.461	15.837	0	32.556
90	MORALZARZAL	2.551	144.000	921.179	12.896	262	2.484	32.725
91	MORATA DE TAJUNA	0	18.554	138.798	141.101	0	0	6.708
92	MOSTOLES	0	392.201	381.323	460.831	126.210	54.415	382.153
96	NAVALCARNERO	3.569.874	252.325	235.616	624.733	561.902	10.143	196.264
104	PARACUELLOS DEL JARAMA	0	1.138.842	1.307.543	929.102	451.351	33.100	105.170
106	PARLA	0	276.254	299.041	4.193.315	45.918	504	968.264
113	PIRTO	37.541	694.036	4.027.394	2.816.171	1.266.271	1.666	93.270
115	POZUELO DE ALARCÓN	84.549	4.263.485	760.338	664.799	1.224.475	0	1.294.908
119	QUIJORNA	5.467	794	815.038	168.295	0	0	11.824
123	RIVAS VACIAMADRID	4.699.061	164.819	144.248	206.537	528.718	53.527	303.696
127	ROZAS DE MADRID LAS	0	513.793	1.566.403	3.447	188.145	22.980	1.040.654
129	SAN AGUSTÍN DE GUADALIX	0	27.330	302.230	434.011	0	0	84.046
130	SAN FERNANDO DE HENARES	0	9.098	3.127	3.149.256	1.161.513	392.841	107.771
132	SAN MARTÍN DE LA VEGA	2.544	14.872	171.332	6.477	0	0	55.565
134	SAN SEBASTIÁN DE LOS REYES	4.284.250	212.037	693.720	3.606.940	1.885.852	0	326.872
141	SEVILLA LA NUEVA	0	108.431	809.944	45.937	0	0	204.746
145	TALAMANCA DE JARAMA	682.727	0	144.929	168.923	0	0	14.134
148	TORREJÓN DE ARDOZ	0	1.045.777	403.231	771.062	55.820	3.289.773	146.692
149	TORREJÓN DE LA CALZADA	83.044	1.627	476.539	163.875	205.303	0	77.638
150	TORREJÓN DE VELASCO	0	594.659	4.682.384	370.104	156.090	0	52.959
152	TORRELÓDONES	0	35.283	748.674	7.052	60.037	3.569	88.669
161	VALDEMORO	2.000.422	83.716	374.016	3.329.916	32.698	99.813	448.178
167	VELILLA DE SAN ANTONIO	0	78.944	449.016	194.959	2.181	0	88.253
176	VILLANUEVA DE LA CANADA	0	228.359	2.179.823	0	117.570	0	831.694
177	VILLANUEVA DEL PARDILLO	0	19.491	838.855	2.519	35.627	0	263.488
178	VILLANUEVA DE PERALES	0	2.538	479.271	87.570	0	0	49.727
180	VILLAREJO DE SALVANES	135.250	33.923	944.453	1.419.309	0	0	13.308
181	VILLAVICIOSA DE ODÓN	0	73.000	1.646.117	26.908	946.357	0	518.058
903	ÁMBITO METROPOLITANO	3.305.231	69.365	1.047.062	25.323	0	0	34.516
<b>TOTAL ÁMBITO METROPOLITANO</b>		<b>23.271.418</b>	<b>21.690.430</b>	<b>62.060.296</b>	<b>52.750.215</b>	<b>19.105.771</b>	<b>6.222.315</b>	<b>20.329.639</b>

