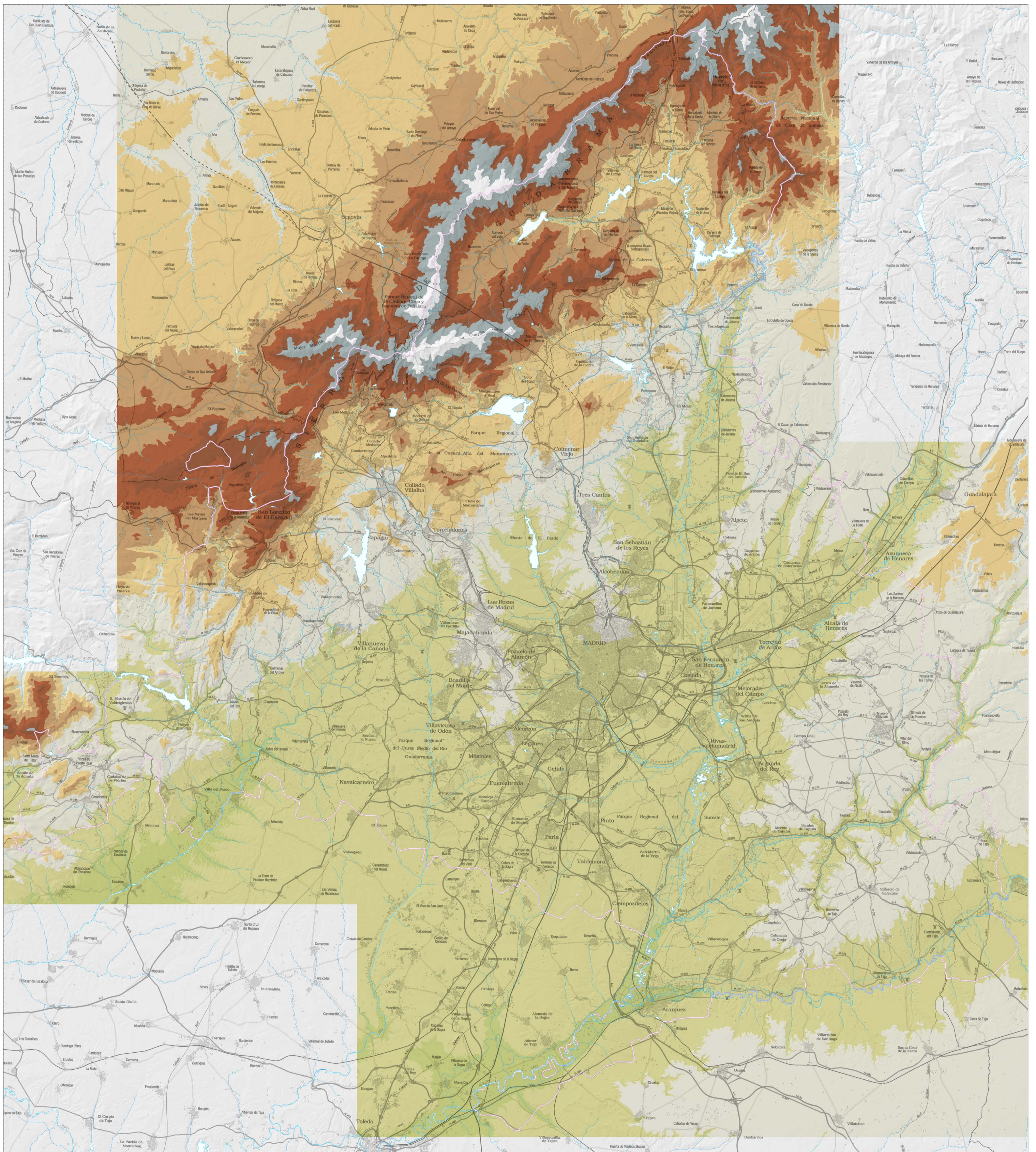
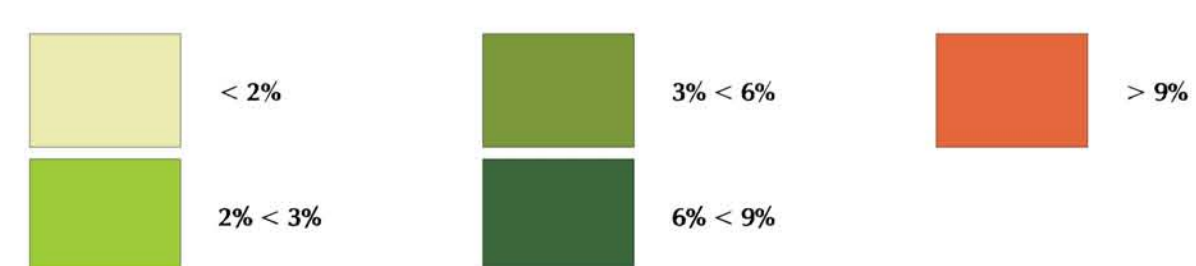
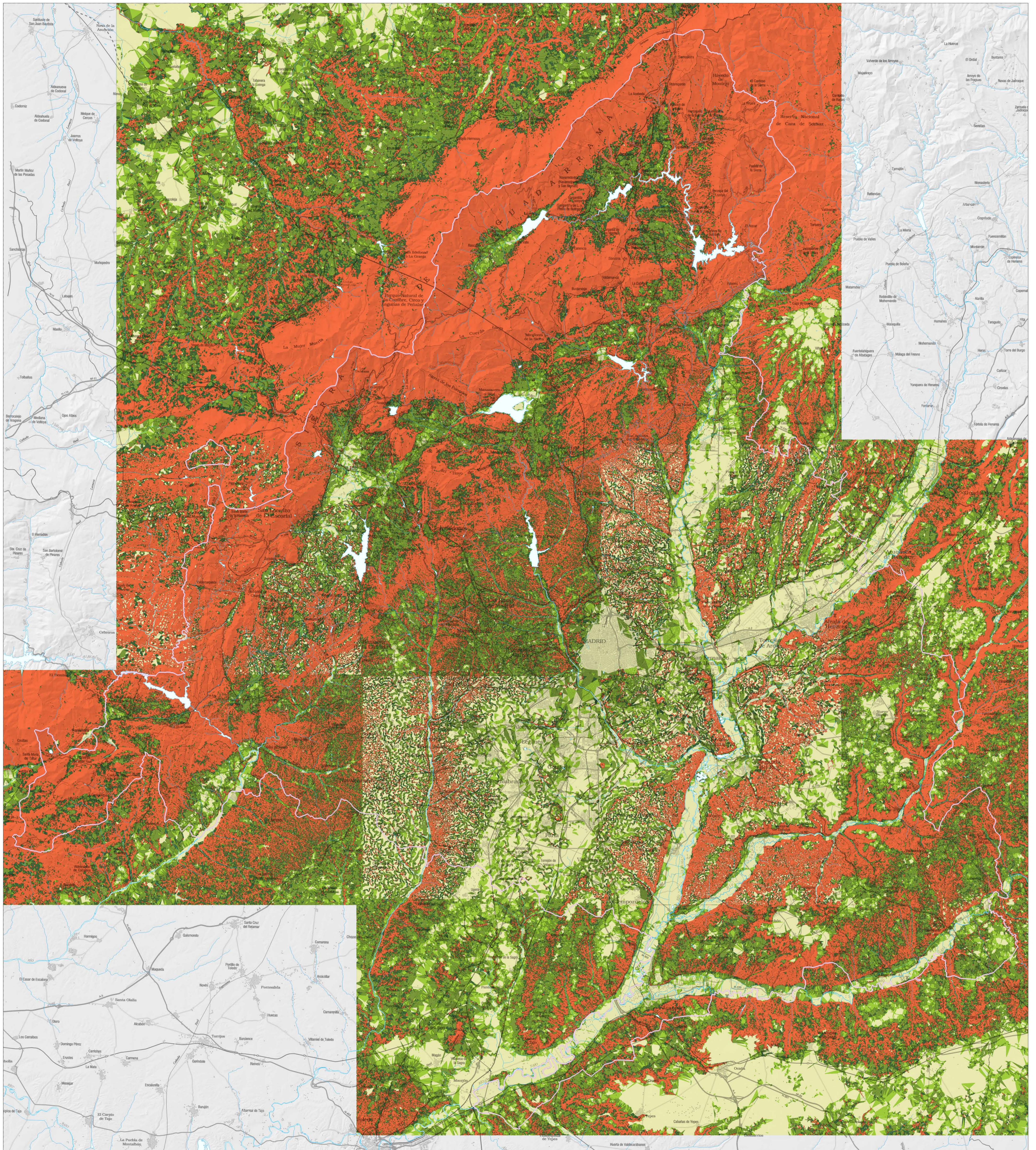


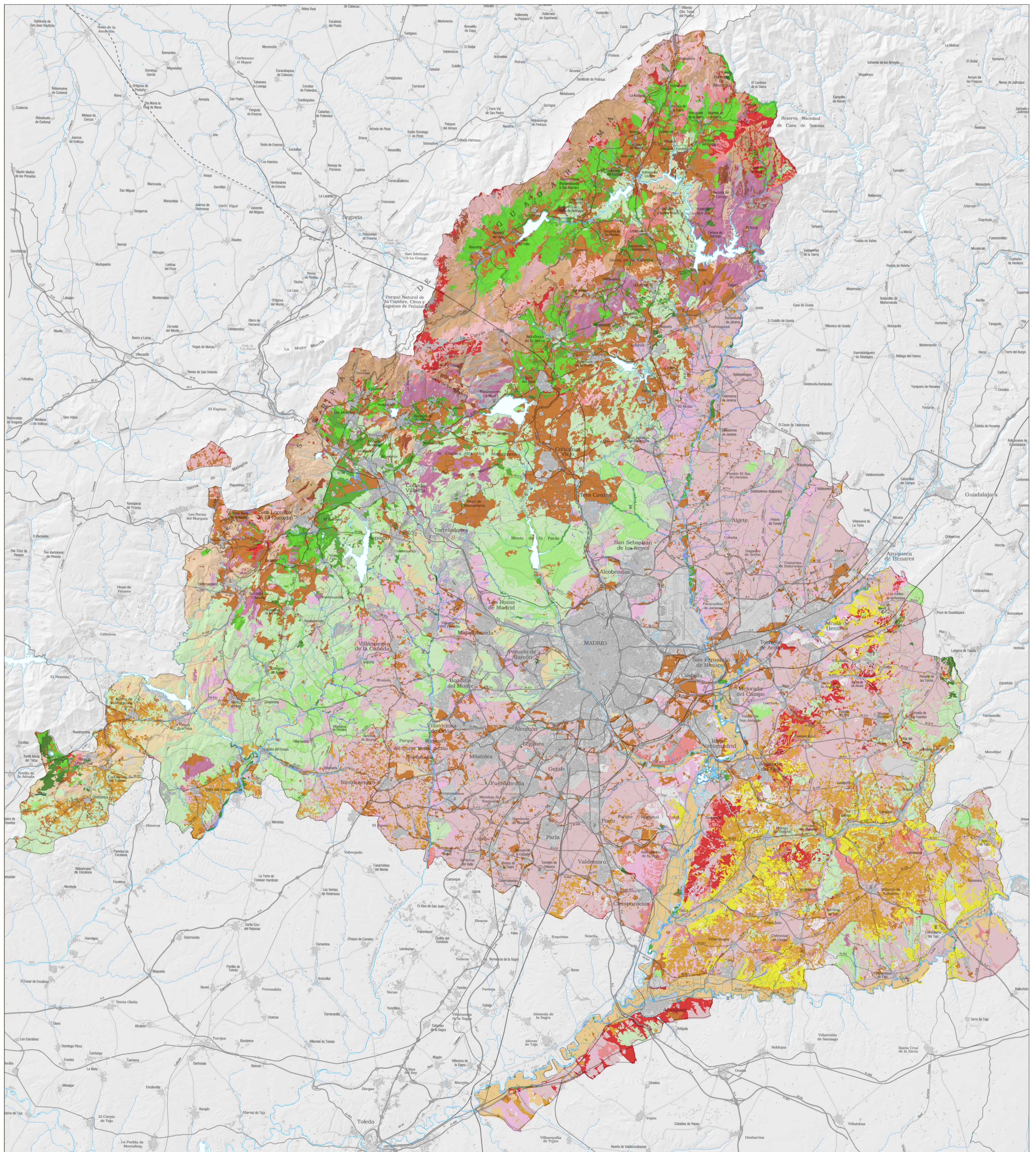
# HIPSOMÉTRICO



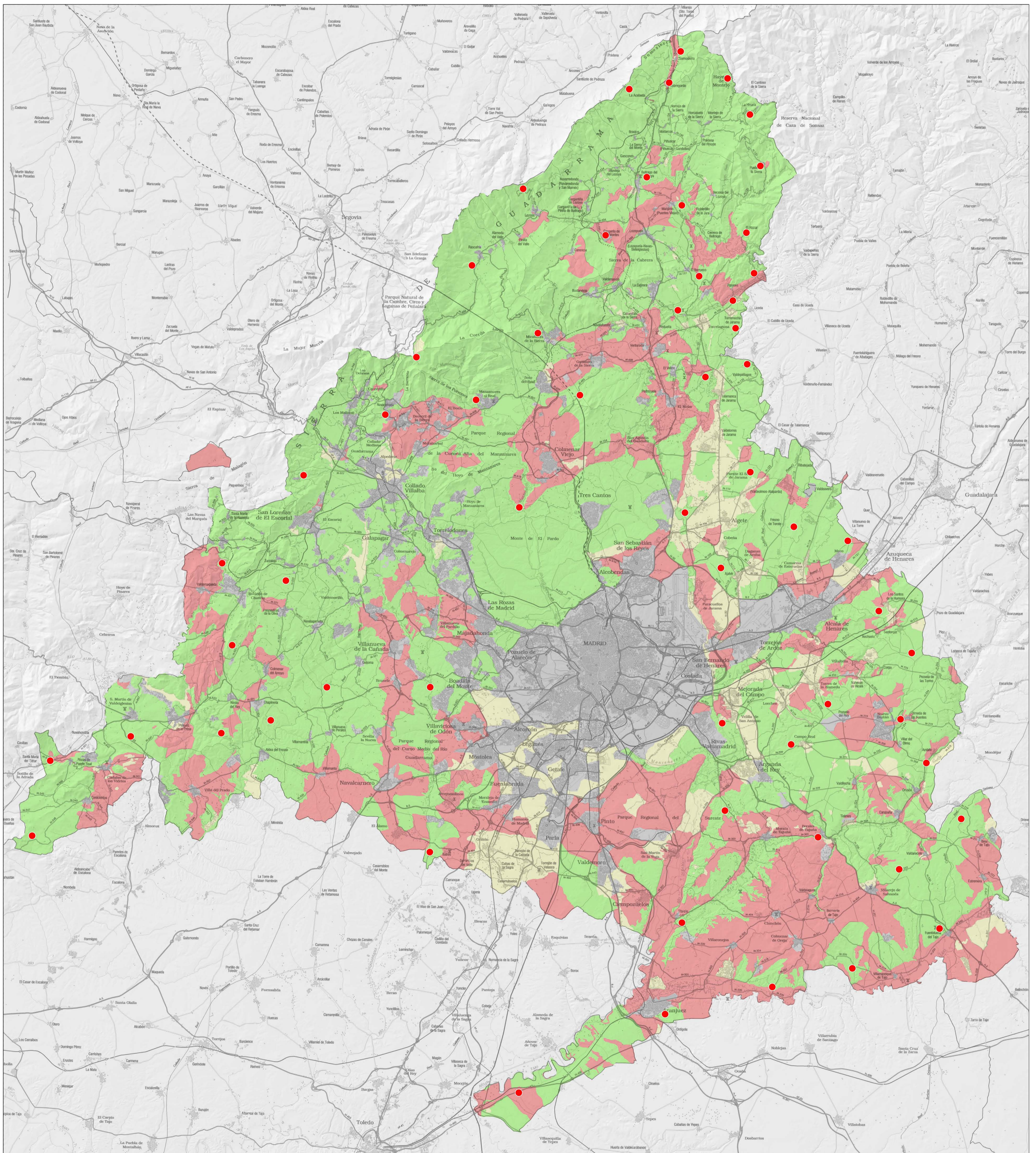
# CLINOMÉTRICO



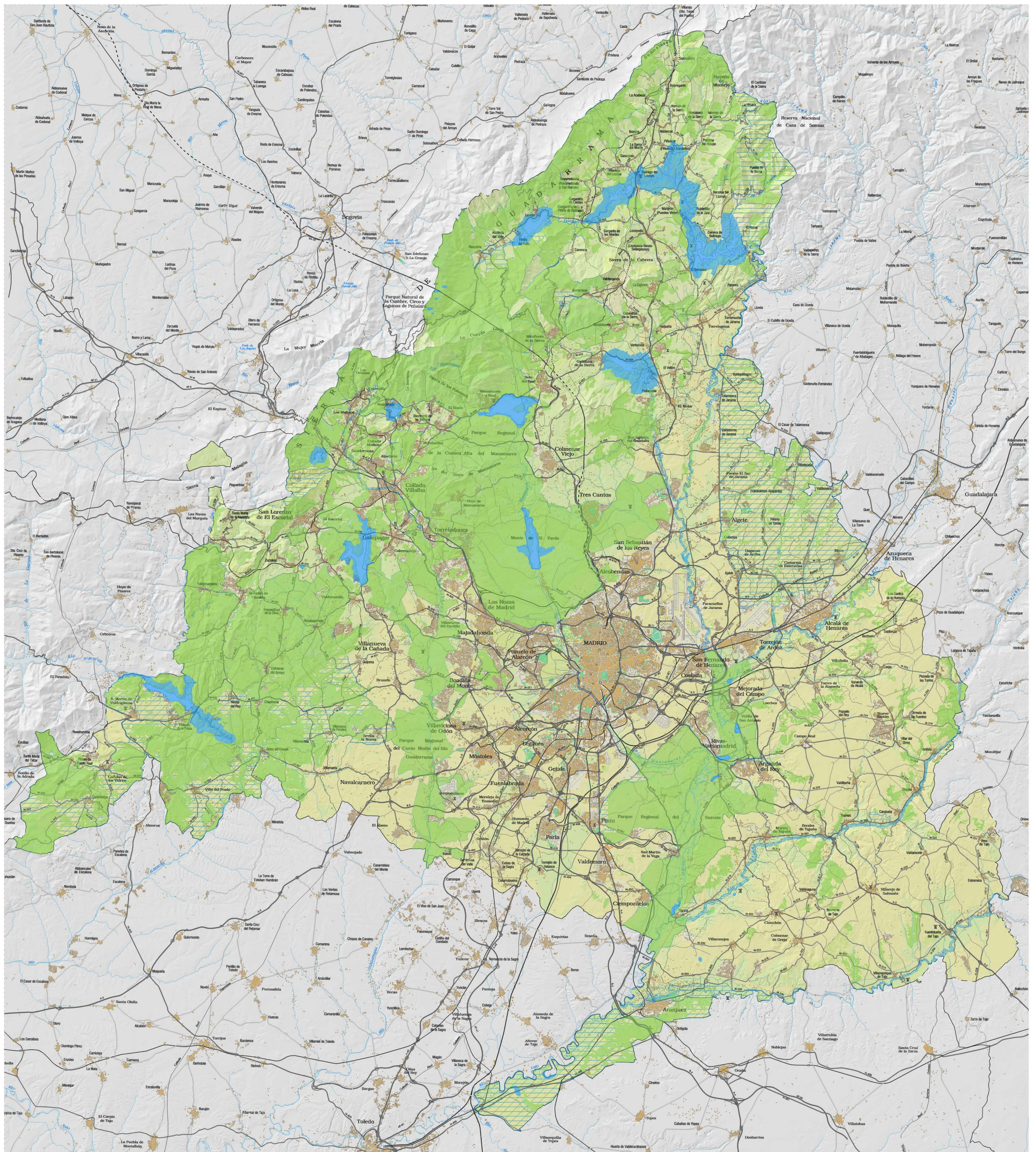
# VEGETACIÓN



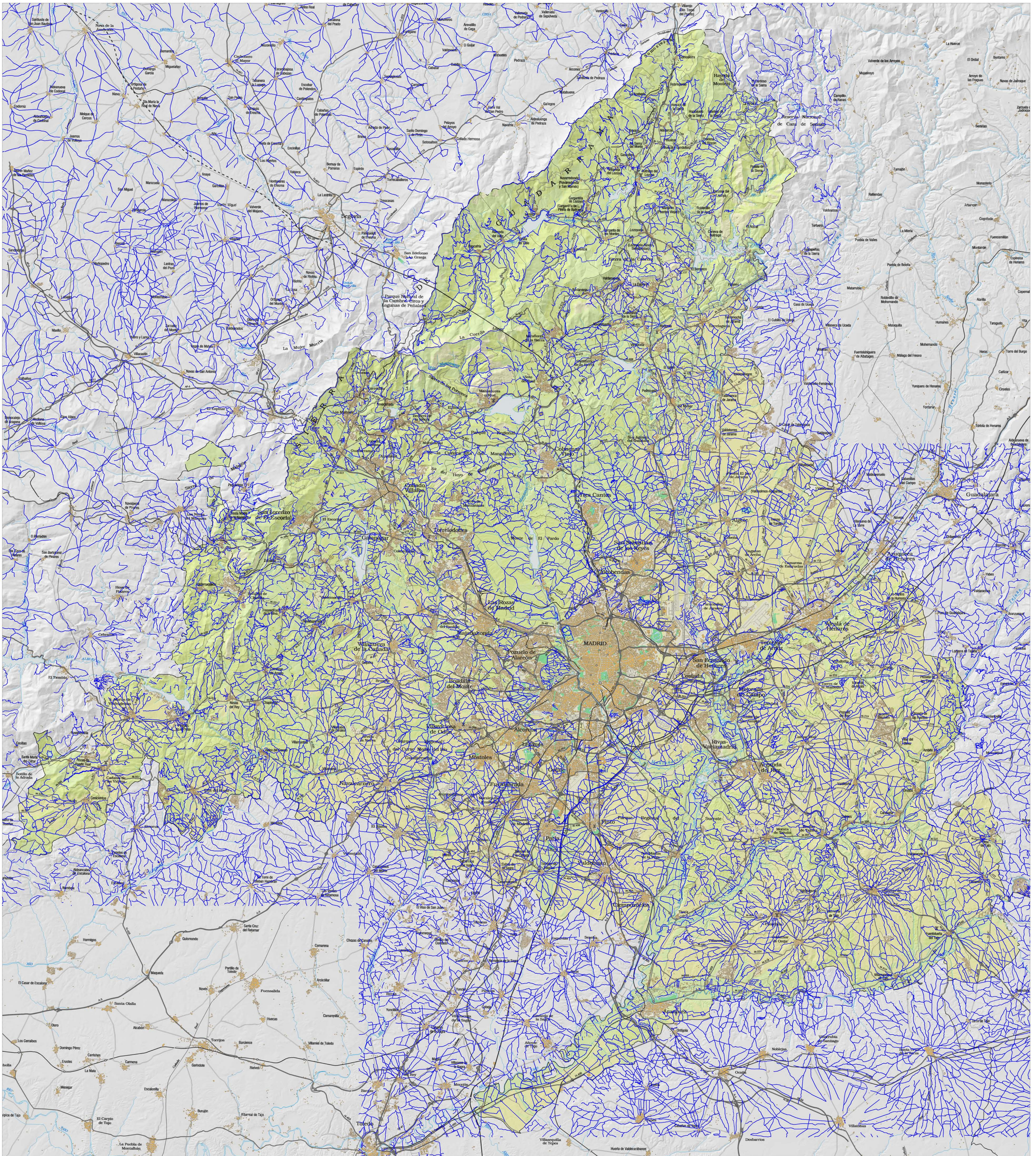
# PAISAJE



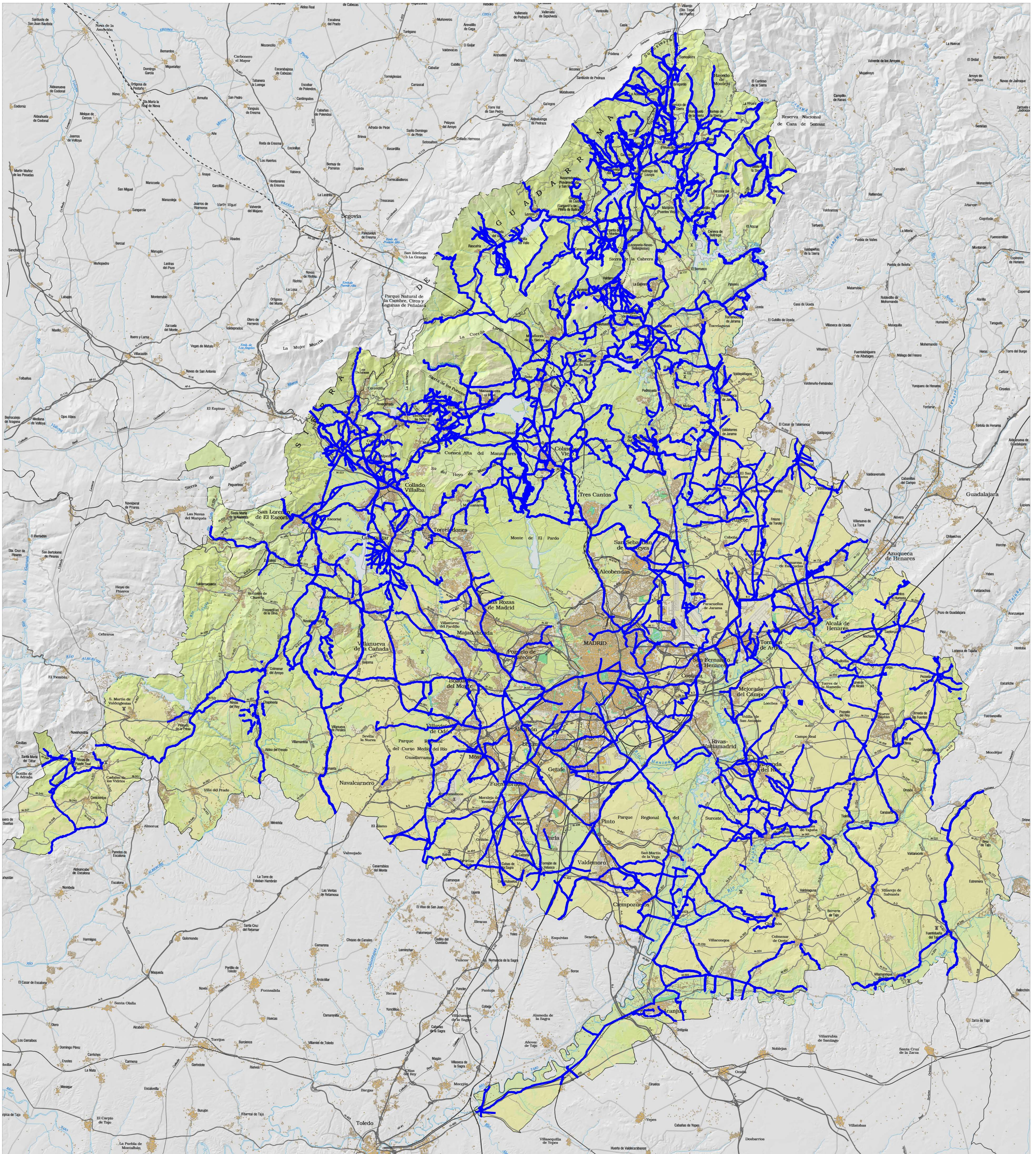
# RED DE ESPACIOS PROTEGIDOS



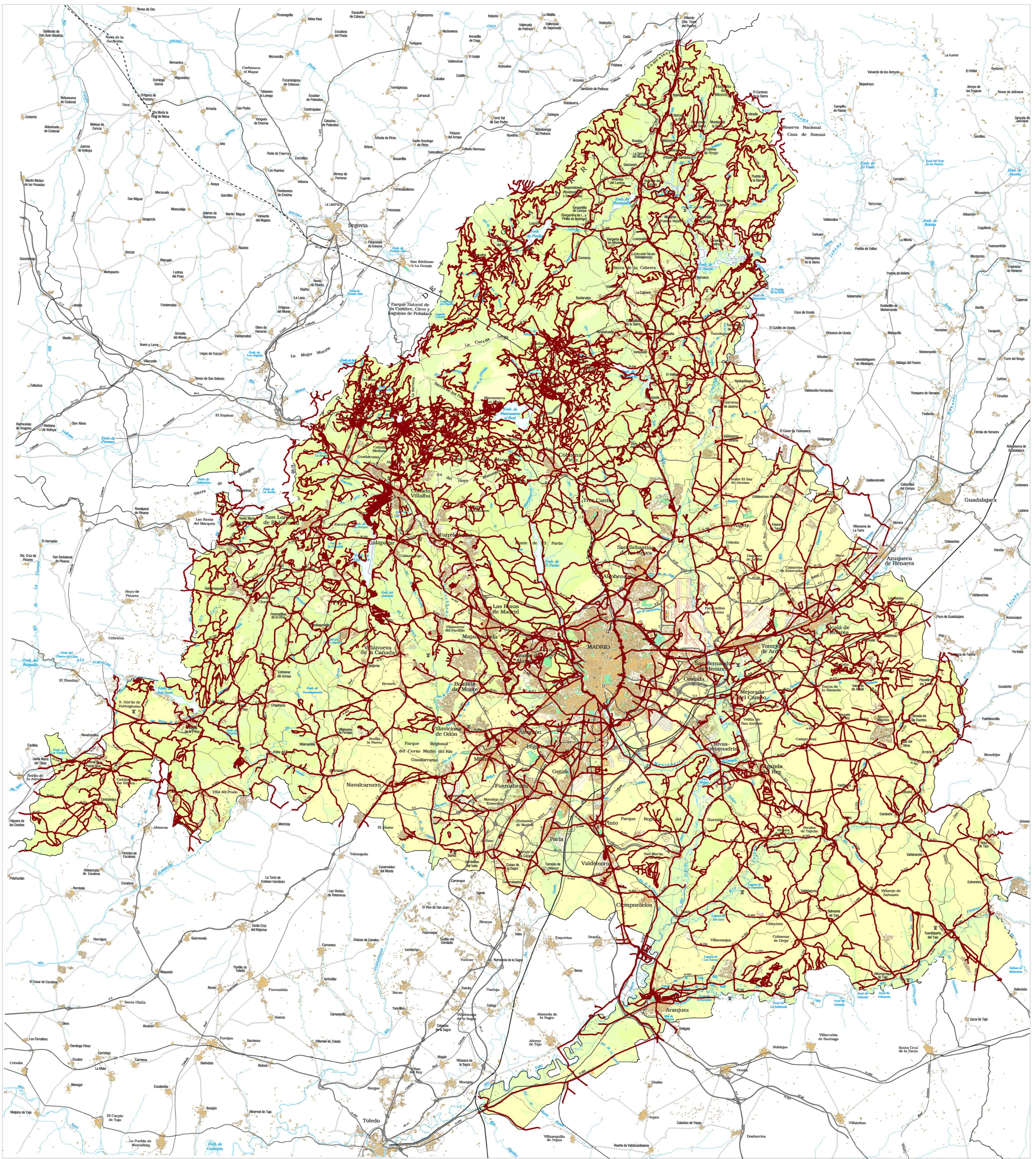
# RED DE CAMINOS



# RED DE VIAS PECUARIAS

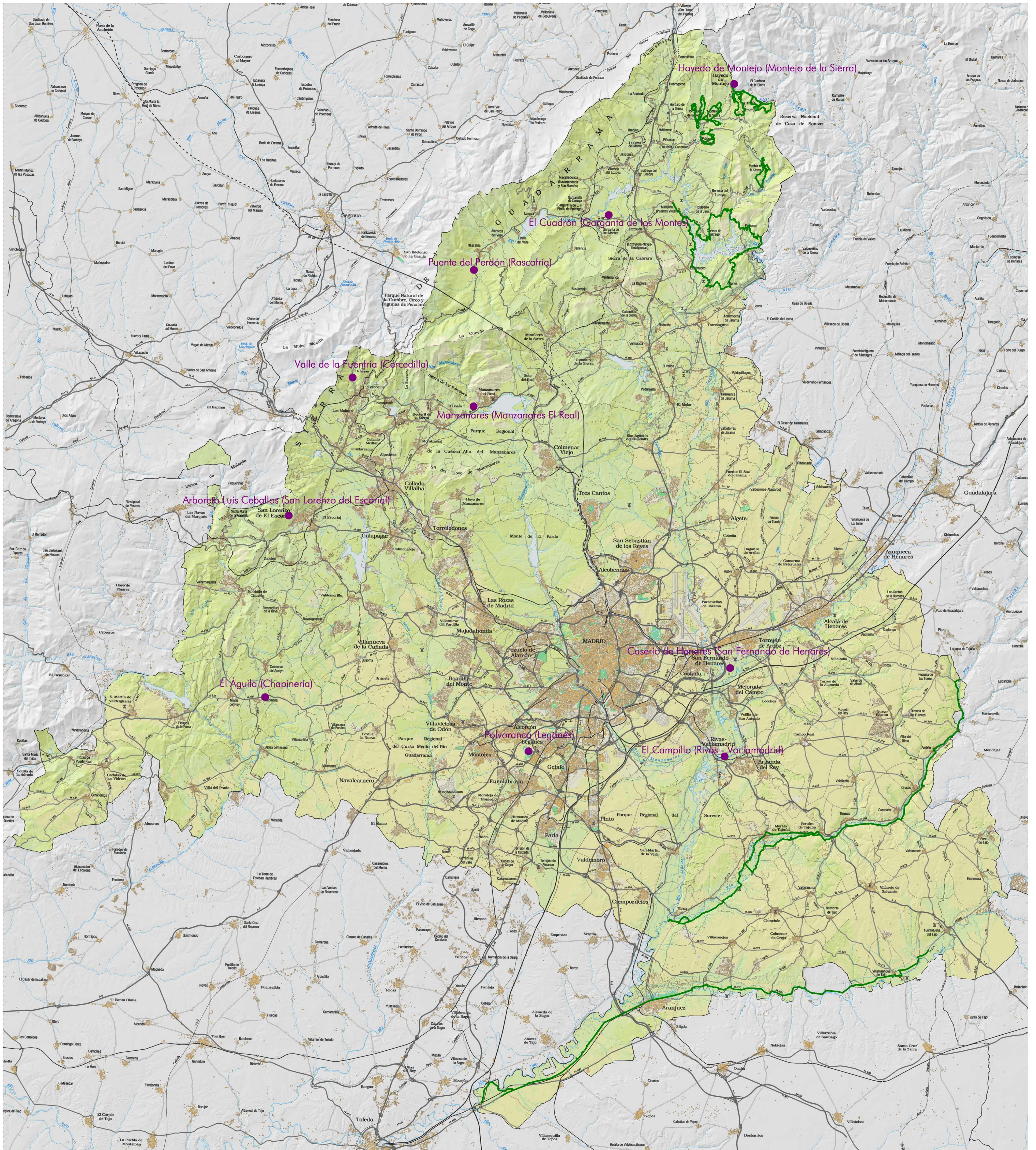


# RED DE CAMINOS FORESTALES

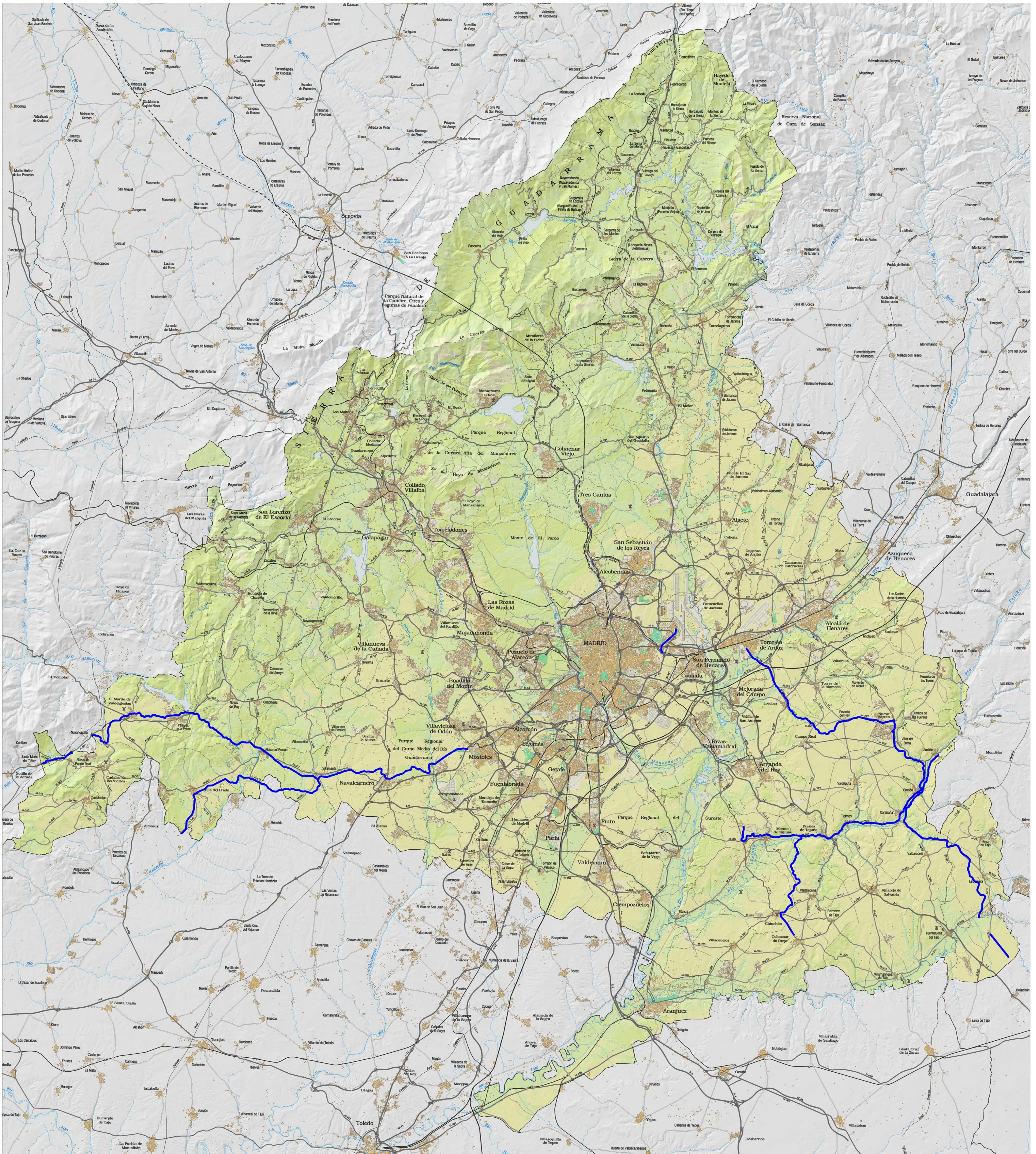




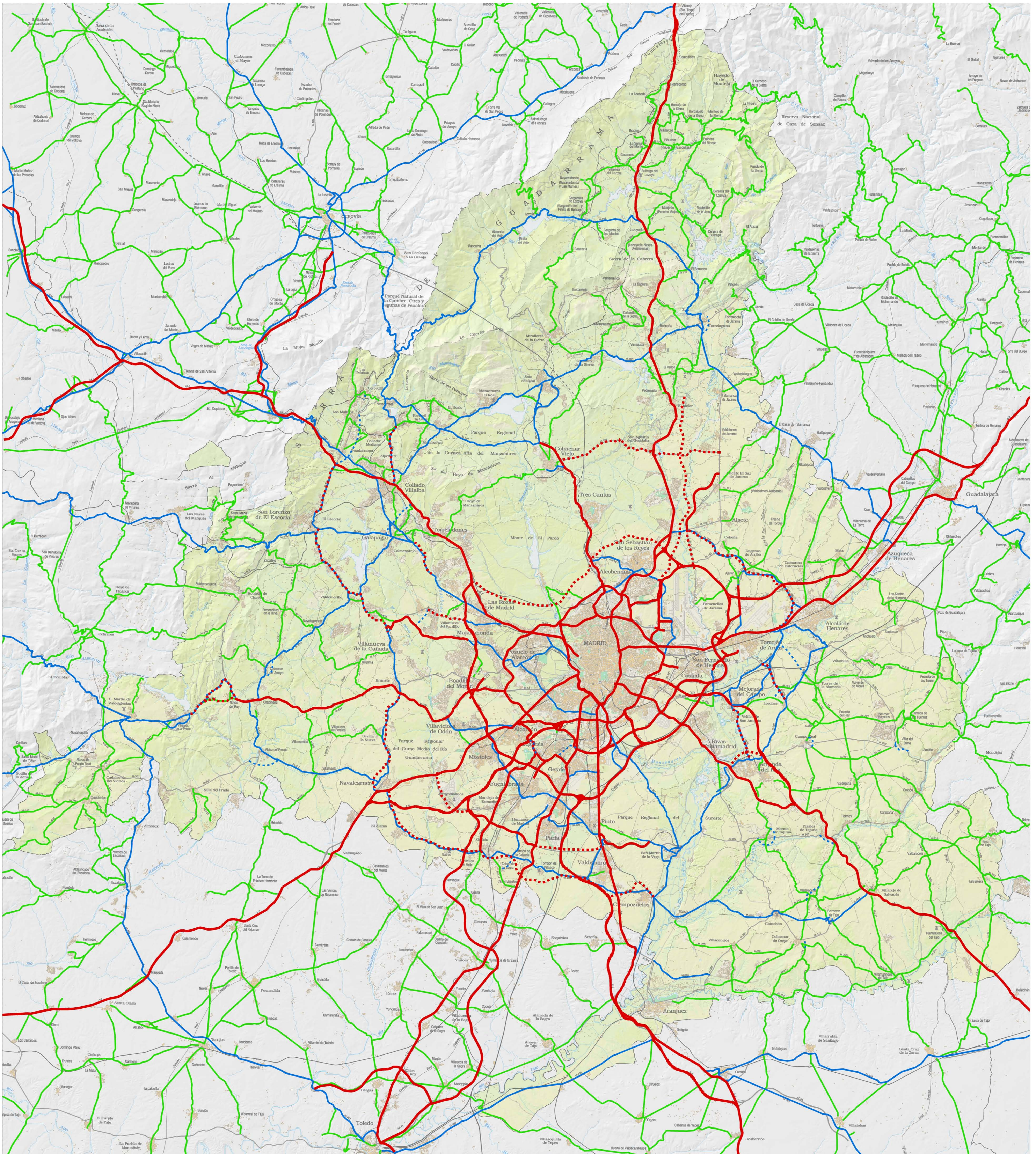
# RED DE SENDAS Y CENTROS DE EDUCACIÓN AMBIENTAL



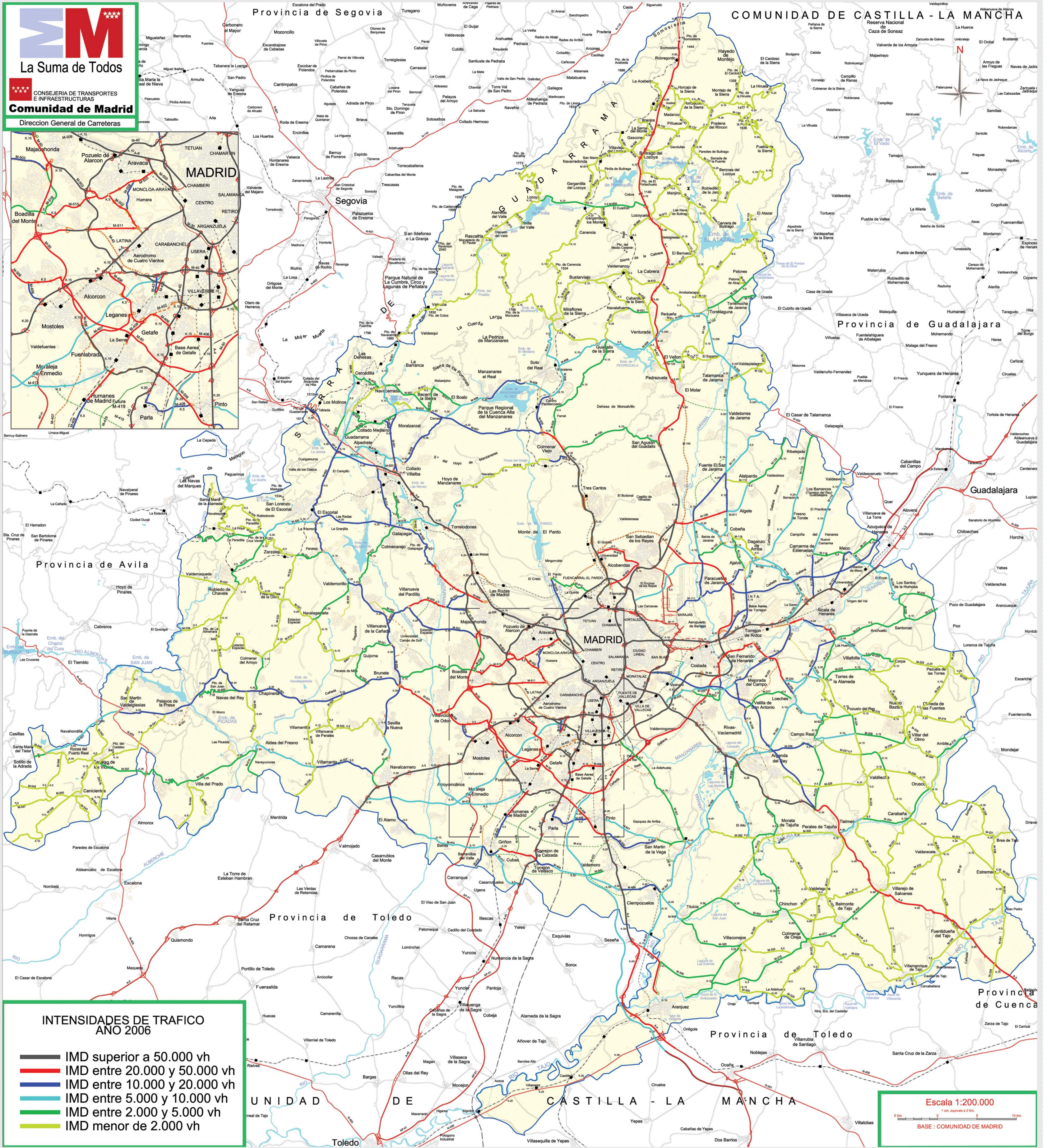
# RED DE FERROCARRILES ABANDONADOS



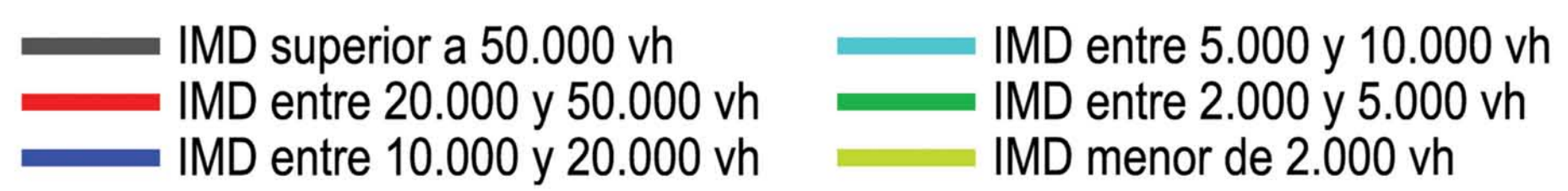
# RED DE CARRETERAS



# INTENSIDADES MEDIAS DIARIAS DE TRÁFICO



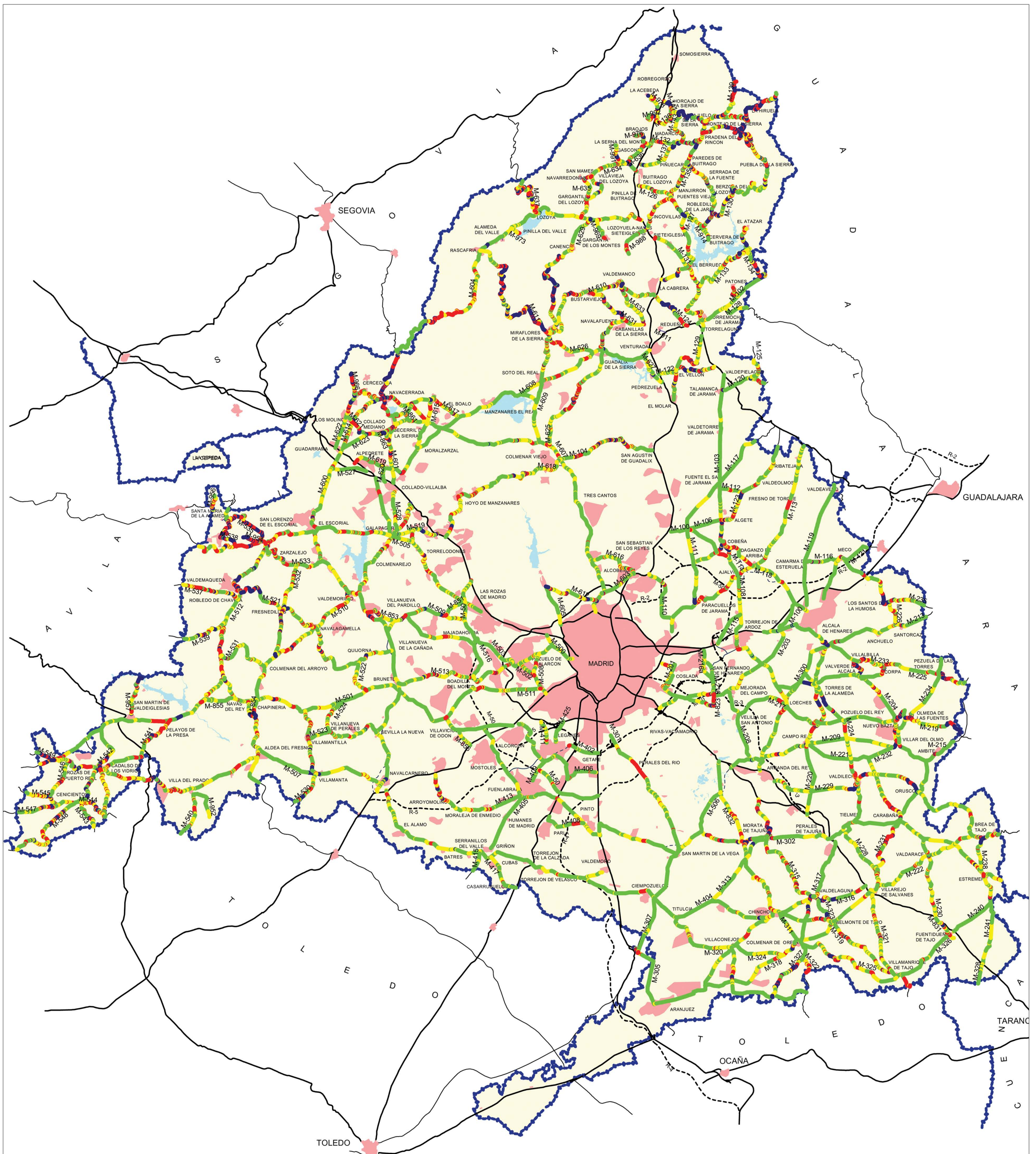
Escala 1:200 000 (1 cm. equivale a 2000 m.)  
 5 Km 0 5 10 Km



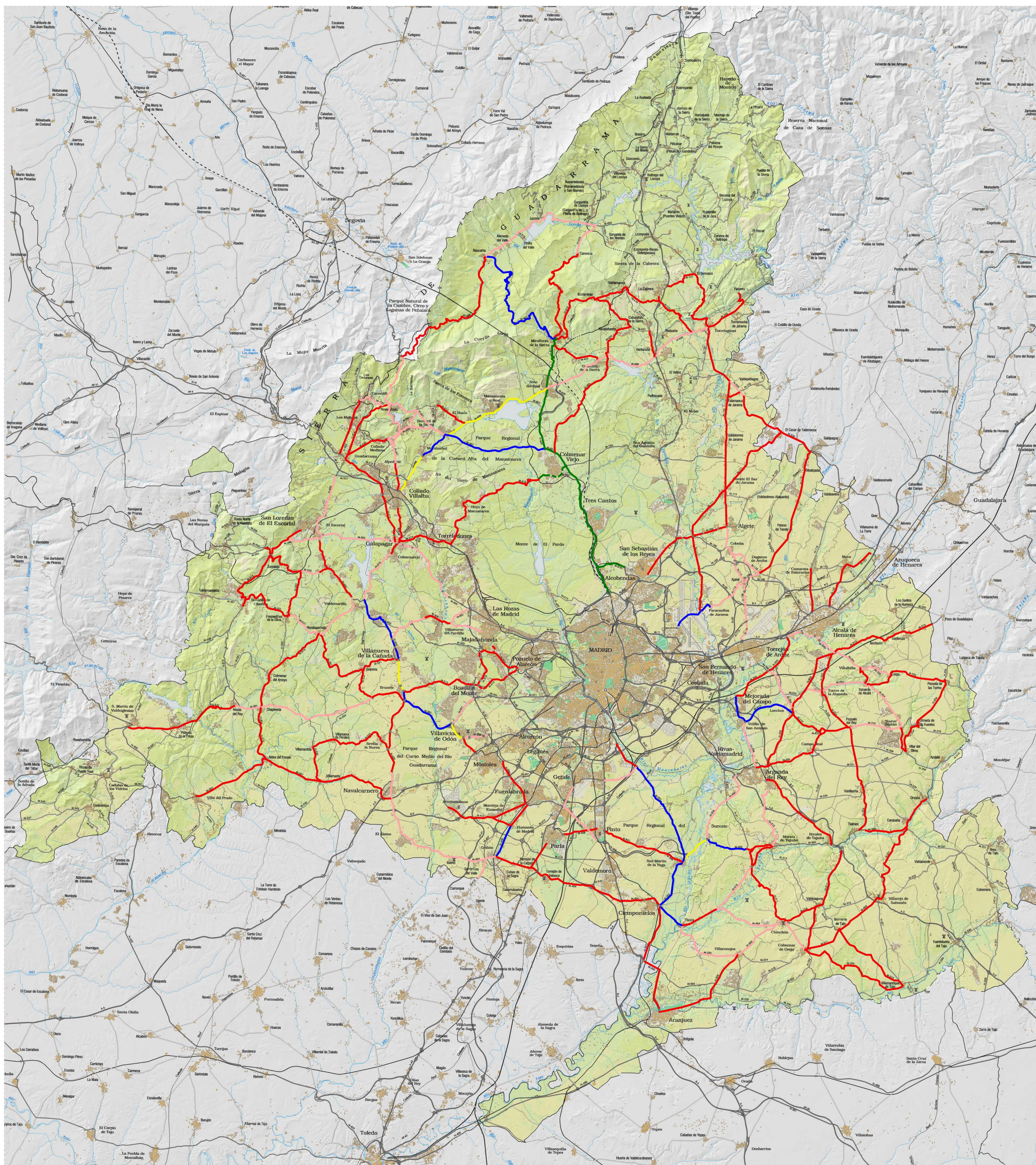
I.12 INTENSIDADES MEDIAS DIARIAS DE TRÁFICO (Enero de 2008)



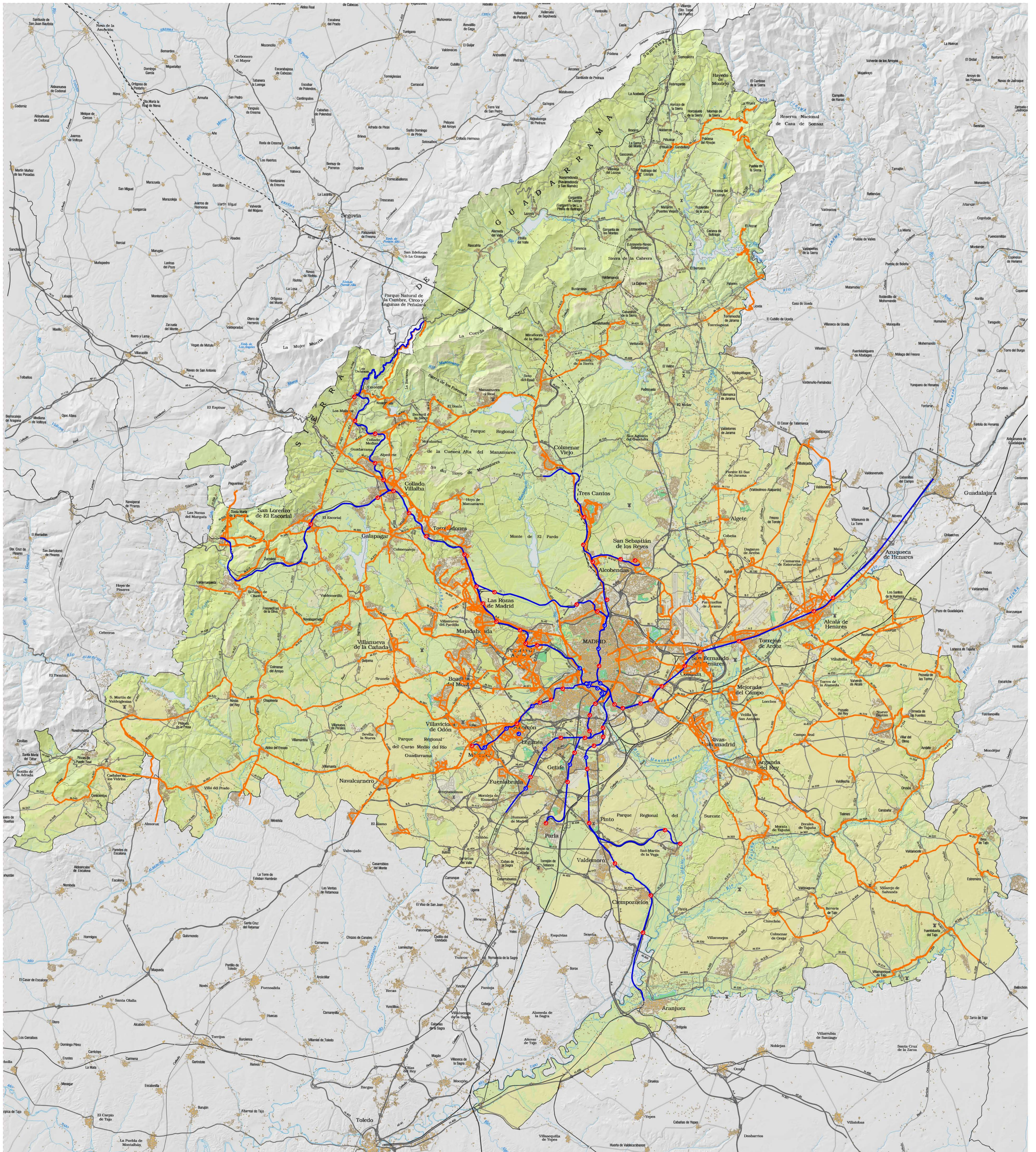
# INCLINACIONES DE CARRETERAS



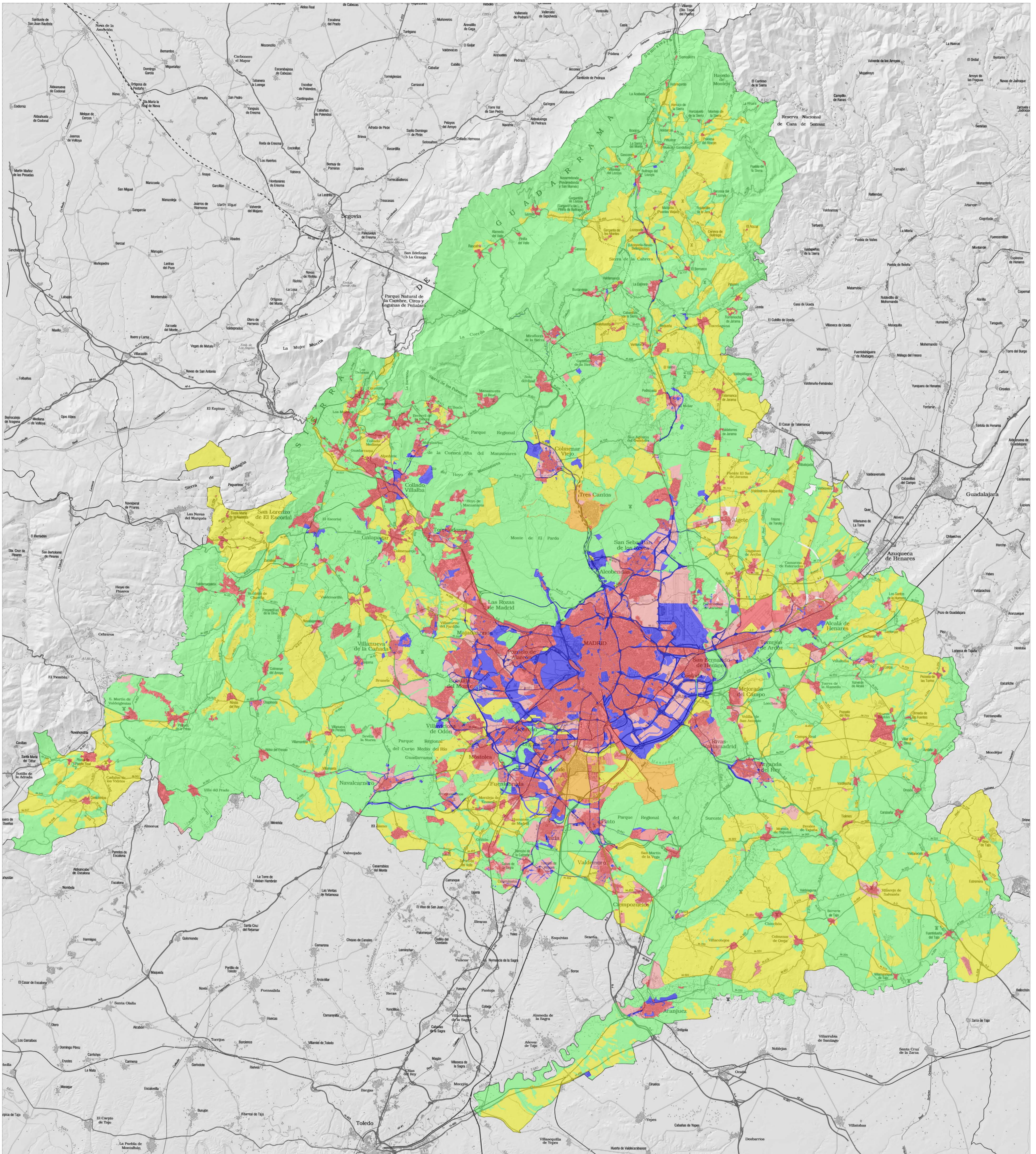
# USO CICLISTA DE LAS CARRETERAS



# RED DE AUTOBUSES INTERURBANOS Y CERCANÍAS

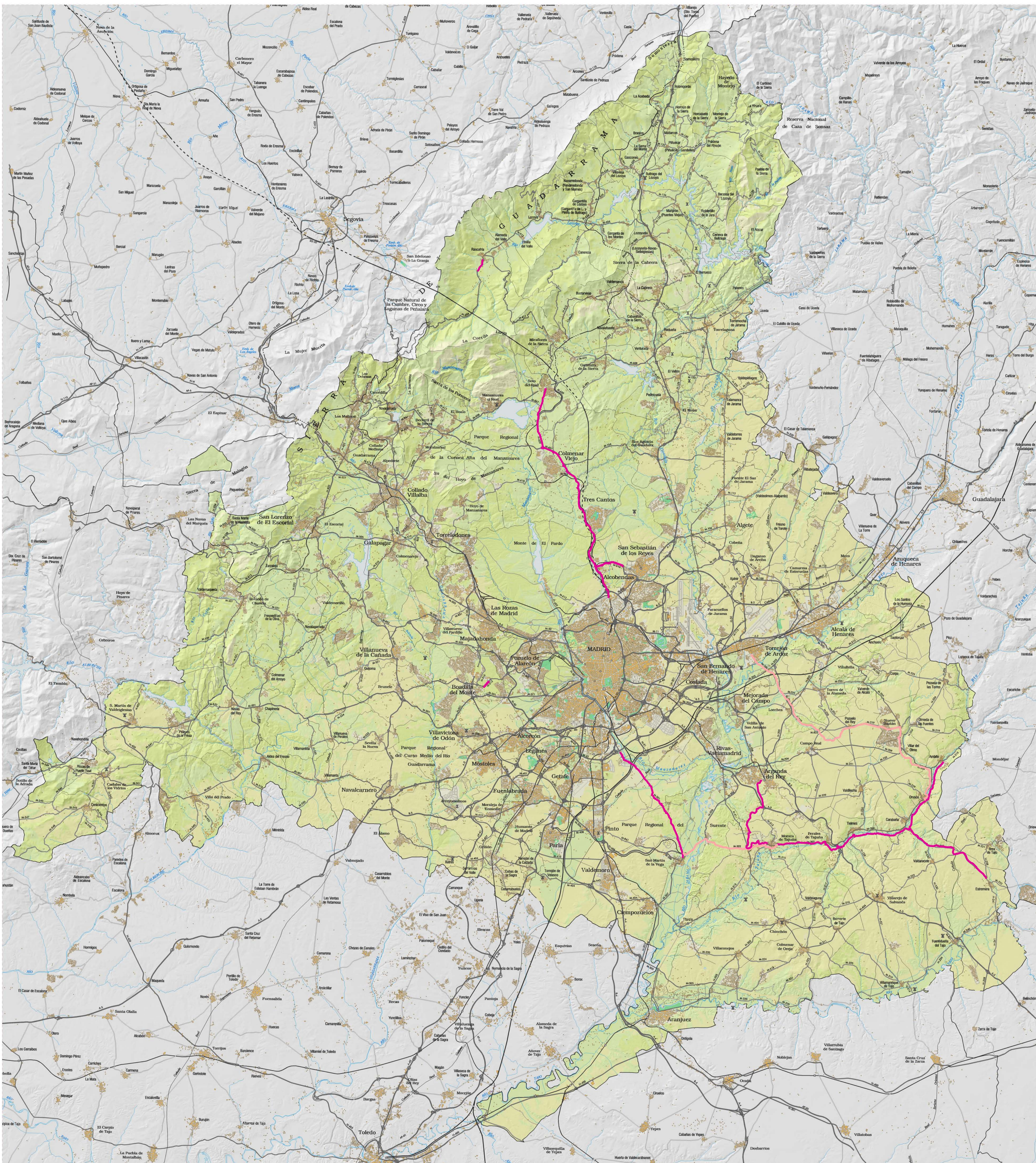


# CLASIFICACIÓN URBANÍSTICA

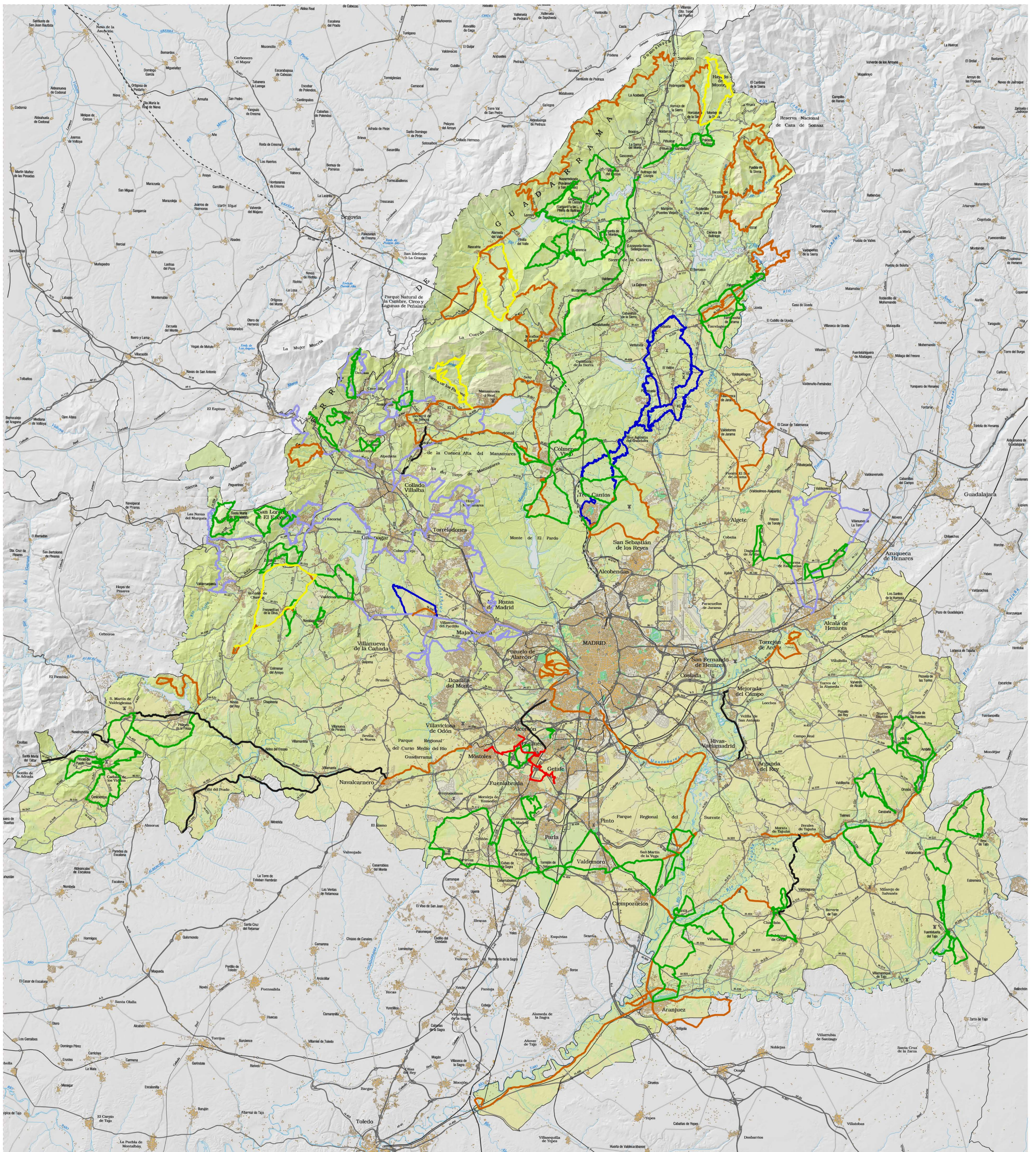




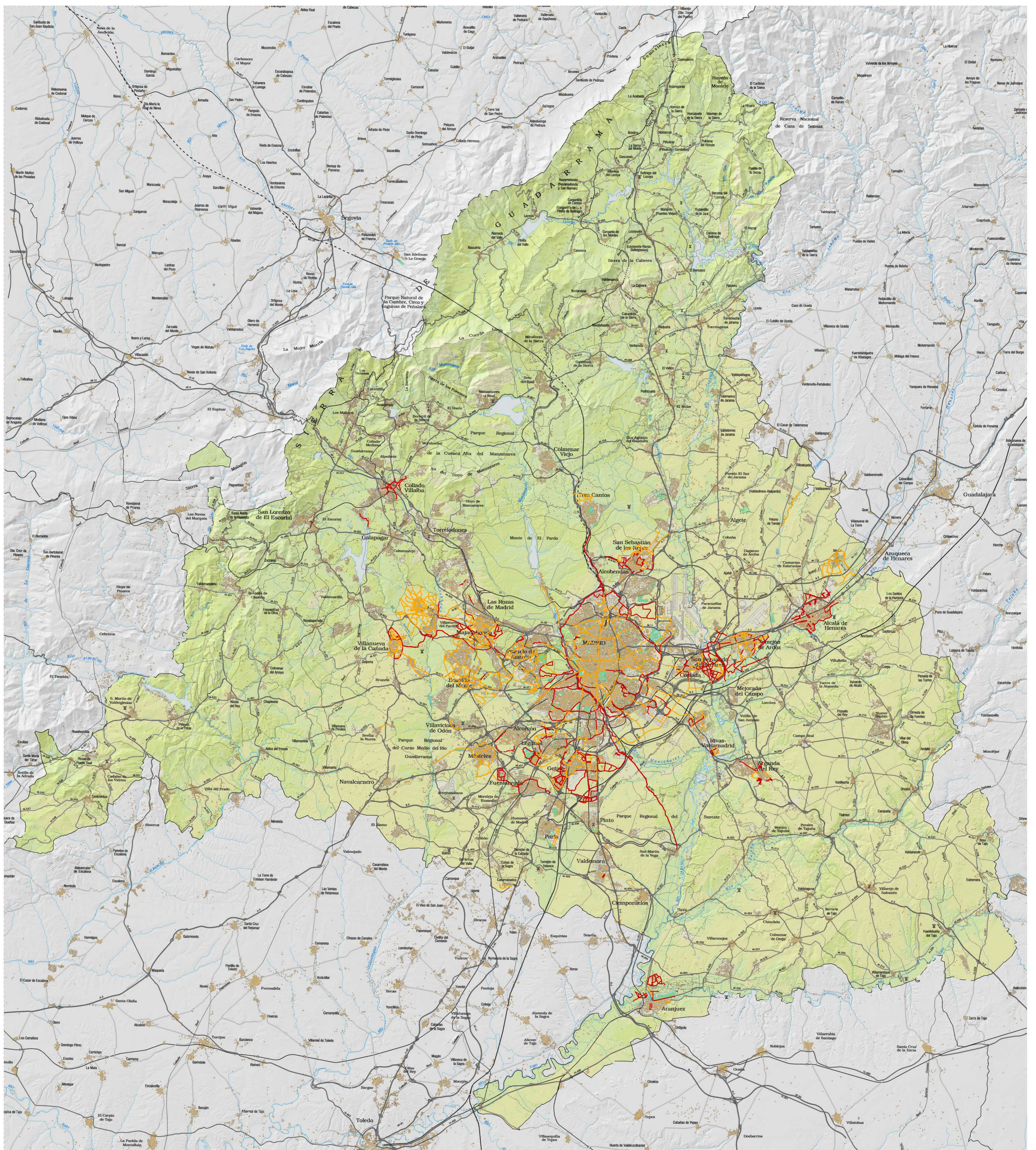
# CARRILES BICI EXISTENTES Y EN PROYECTO



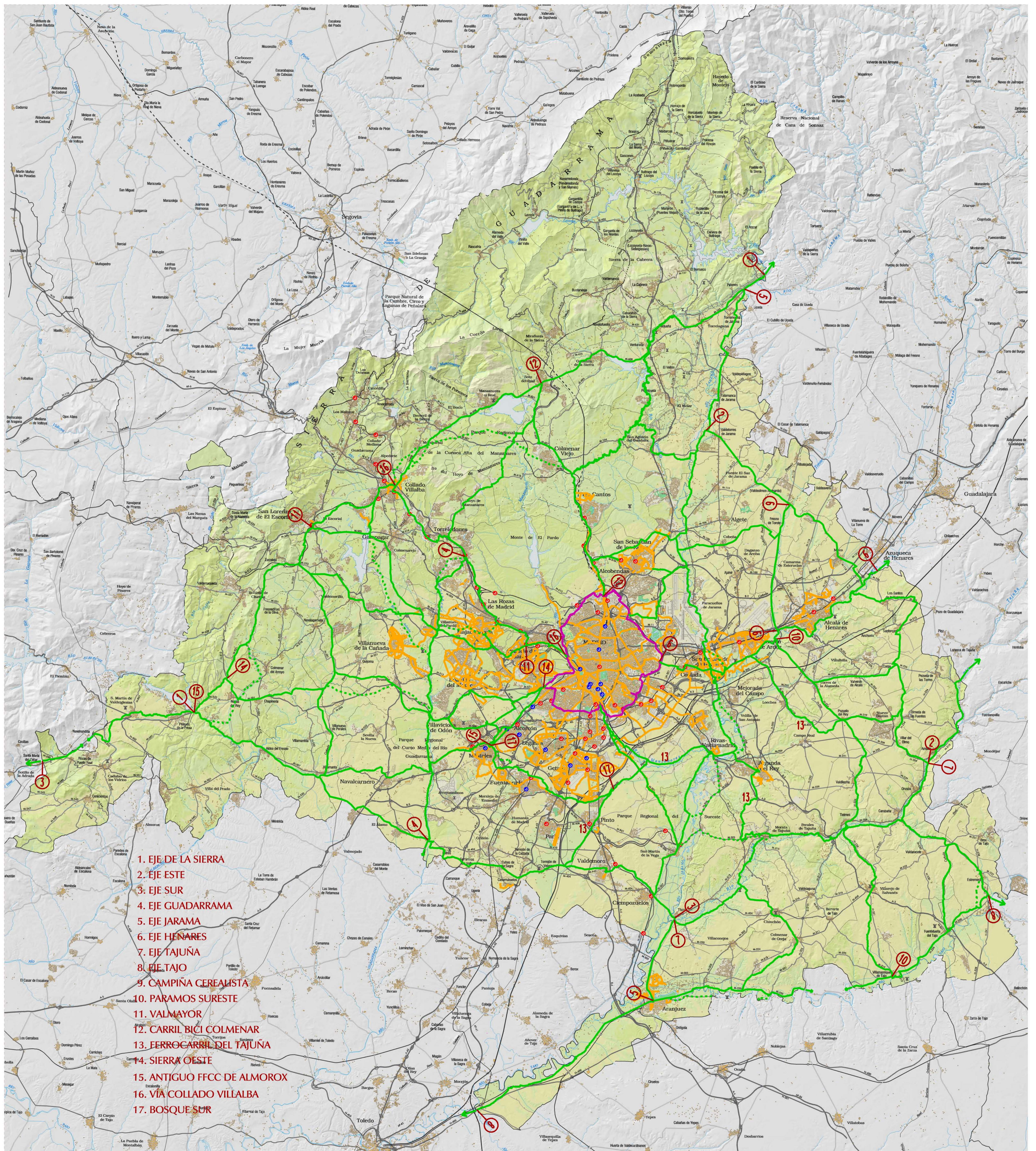
# ITINERARIOS PROPUESTOS DE BICICLETA



# RED MUNICIPAL



# RED BÁSICA DE VÍAS CICLISTAS E INTERCAMBIADORES DE TRANSPORTE



1. EJE DE LA SIERRA
2. EJE ESTE
3. EJE SUR
4. EJE GUADARRAMA
5. EJE JARAMA
6. EJE HENARES
7. EJE TAJUÑA
8. EJE TAJO
9. CAMPIÑA CEREALISTA
10. PARAMOS SURESTE
11. VALMAYOR
12. CARRIL BICI COLMENAR
13. FERROCARRIL DEL TAJUÑA
14. SIERRA OESTE
15. ANTIGUO FFCC DE ALMOROX
16. VÍA COLLADO VILLALBA
17. BOSQUE SUR