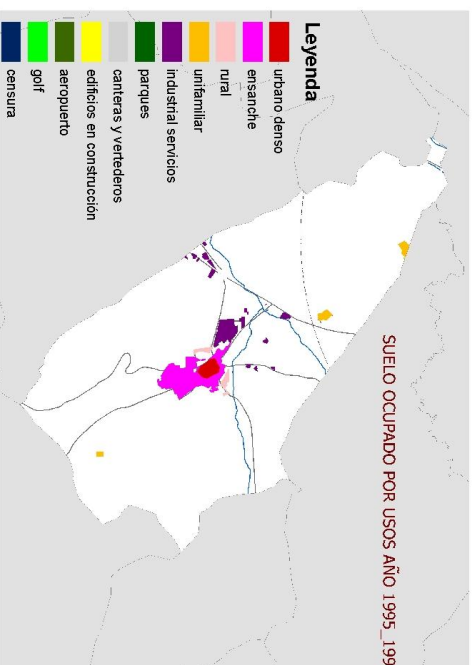
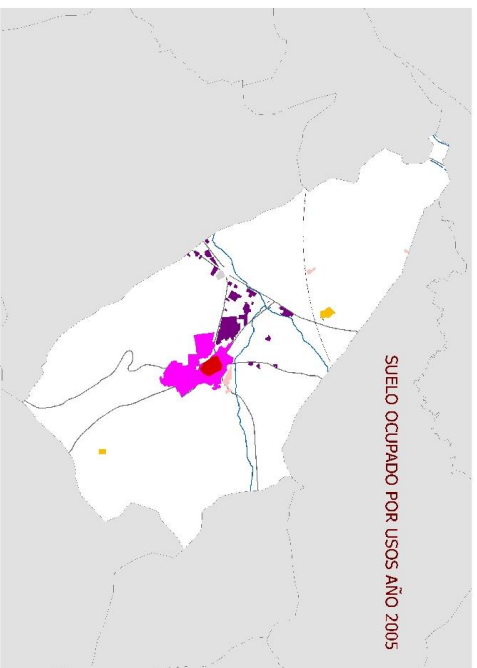
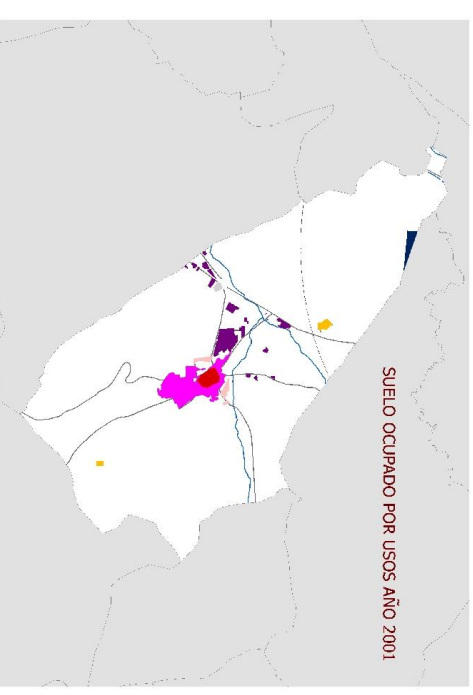
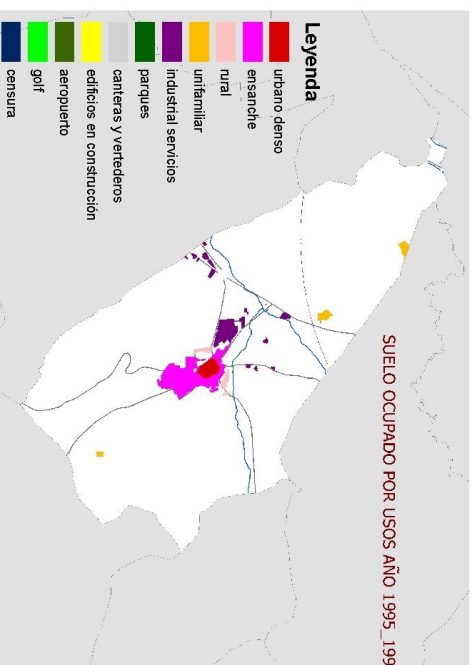
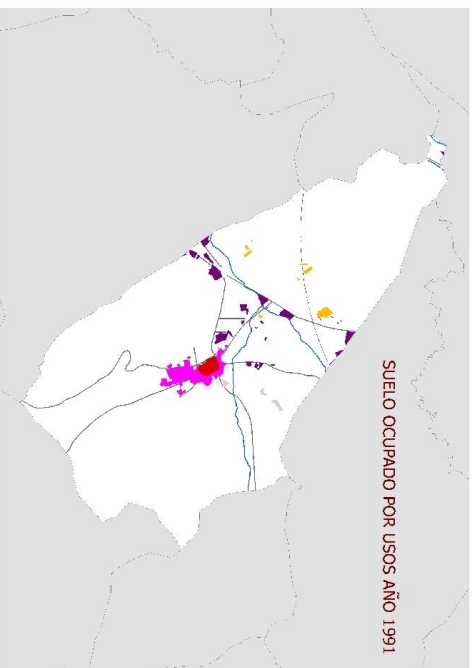
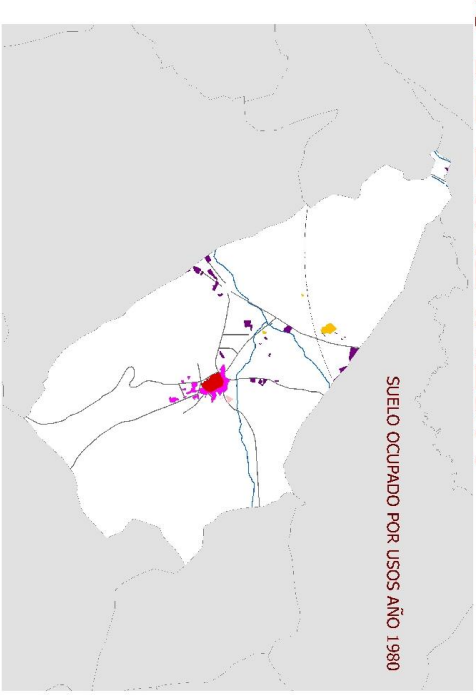
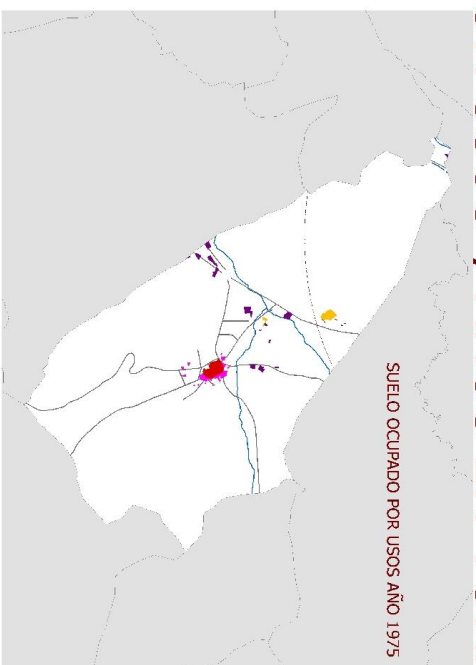
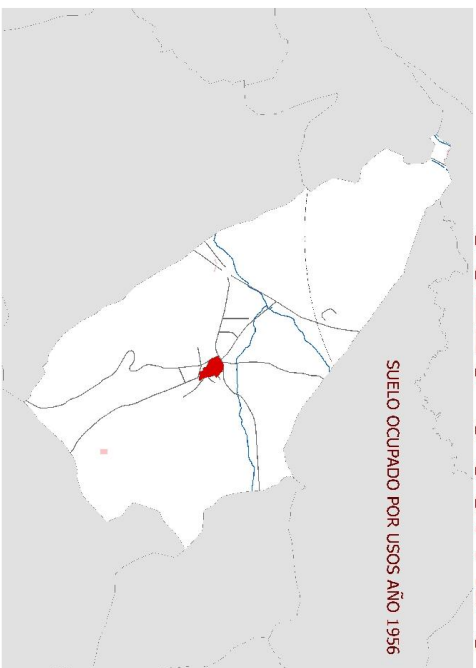


SUELO OCUPADO POR USOS Y AÑOS EN TORRES DE LA ALAMEDA



PERIODOS	HECTAREAS	media año(HA)
1956 A 1975	28,94	1,52
1975 A 1980	24,68	4,94
1980 A 1991	54,74	4,98
1991 A 1995	58,09	14,52
1995_97 A 2001	8,60	1,72
2001 A 2005	16,68	4,17

