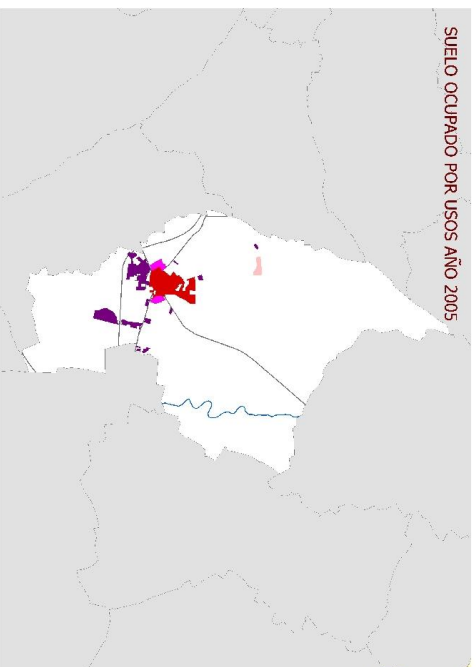
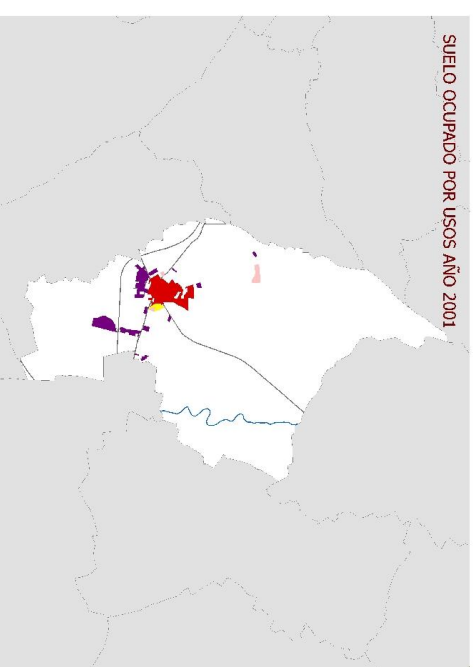
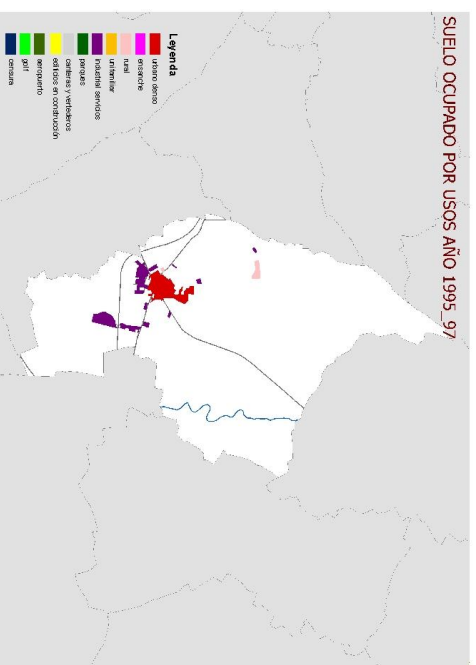
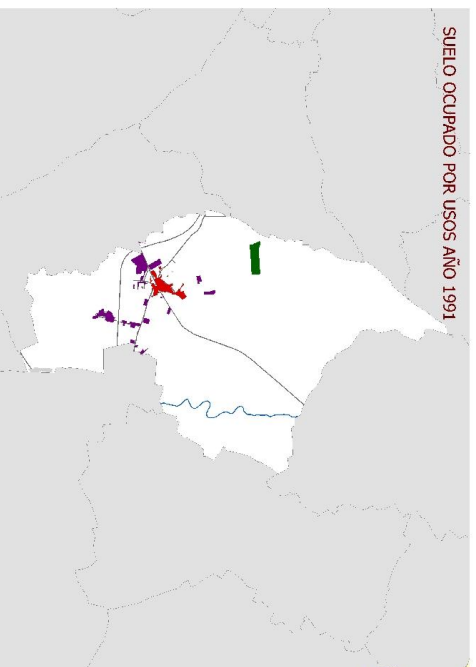
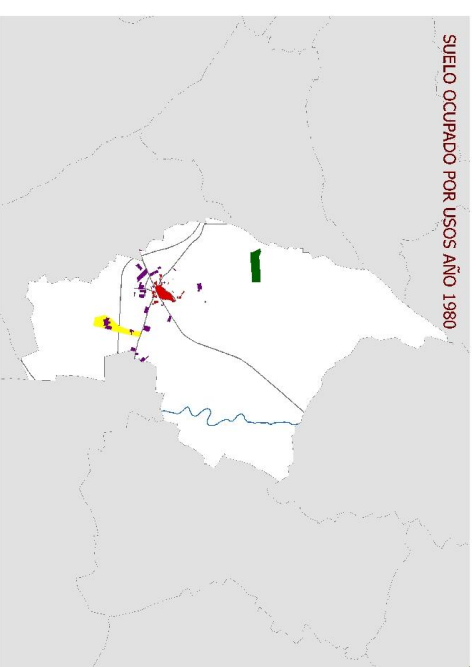
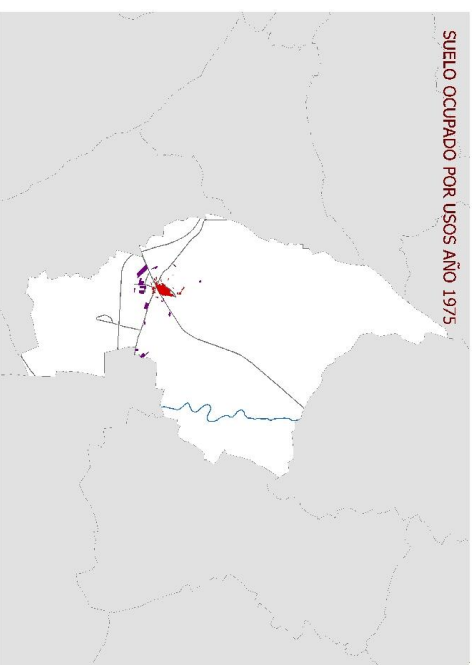
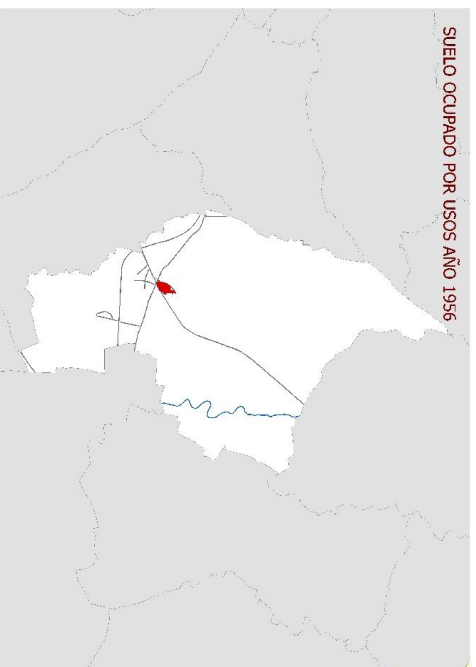
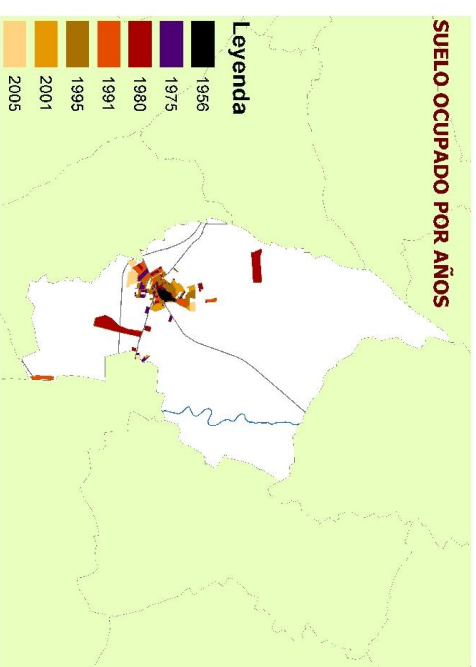


SUELO OCUPADO POR USOS Y AÑOS EN DAGANZO



OCUPACION DE SUELO EN HA		
PERIODOS	HECTAREAS	media año(HA)
1956 A 1975	20,56	1,08
1975 A 1980	69,91	13,98
1980 A 1991	16,95	1,54
1991 A 1995	21,39	5,35
1995_97 A 2001	18,54	3,71
2001 A 2005	24,20	6,05



- Leyenda**
- Urbanismo urbano
 - Reservado
 - Urbano
 - Urbanización
 - Industria
 - Industria derivada
 - Parques
 - Centros y vertederos
 - Centros de transferencia
 - Reservado
 - Agri
 - Costuras